

(19)



Europäisches Patentamt

European Patent Office

Office européen des brevets



(11)

EP 0 522 510 B1

(12)

EUROPEAN PATENT SPECIFICATION

(45) Date of publication and mention
of the grant of the patent:

02.10.1996 Bulletin 1996/40

(51) Int Cl.⁶: **G09G 3/36**

(21) Application number: **92111506.9**

(22) Date of filing: **07.07.1992**

(54) Driving method of driving a liquid crystal display element

Steuerverfahren für ein Flüssigkristallanzeigeelement

Méthode de commande d'un élément d'affichage à cristal liquide

(84) Designated Contracting States:
DE FR GB IT

(30) Priority: **08.07.1991 JP 193502/91**
16.08.1991 JP 229606/91
22.04.1992 JP 129714/92
15.05.1992 JP 148844/92
15.05.1992 JP 148845/92

(43) Date of publication of application:
13.01.1993 Bulletin 1993/02

(73) Proprietor: **ASAHI GLASS COMPANY LTD.**
Chiyoda-ku Tokyo 100 (JP)

(72) Inventors:
• **Kuwata, Takeshi, c/o AG Technology Co., Ltd.**
Yokohama-shi, Kanagawa-ken (JP)
• **Ruckmongathan, Temkar N.,**
c/o Asahi Glass Co. Ltd.
Yokohama-shi, Kanagawa-ken (JP)
• **Nakagawa, Yutaka, c/o AG Technology Co.,Ltd.**
Yokohama-shi, Kanagawa-ken (JP)
• **Koh, Hidemasa, c/o AG Technology Co.,Ltd.**
Yokohama-shi, Kanagawa-ken (JP)

- **Hasebe, Hiroshi, c/o Asahi Glass Co. Ltd.**
Yokohama-shi, Kanagawa-ken (JP)
- **Yamashita, Takashi, c/o Asahi Glass Co. Ltd.**
Yokohama-shi, Kanagawa-ken (JP)
- **Nagano, Hideyuki, c/o Asahi Glass Co. Ltd.**
Yokohama-shi, Kanagawa-ken (JP)
- **Ohnishi, Takanori, c/o AG Technology Co.,Ltd.,**
Yokohama-shi, Kanagawa-ken (JP)

(74) Representative:
Wächtershäuser, Günter, Prof. Dr.
Patentanwalt,
Tal 29
80331 München (DE)

(56) References cited:
GB-A- 2 002 562

- **CONFERENCE RECORD OF THE 1988**
INTERNATIONAL DISPLAY RESEARCH
CONFERENCE, 4 October 1988, San Diego US,
pp. 80-85, XP000043606; T.N.
RUCKMONGATHAN et al.: 'A Generalized
Addressing Technique for RMS Responding
Matrix LCDs'

EP 0 522 510 B1

Note: Within nine months from the publication of the mention of the grant of the European patent, any person may give notice to the European Patent Office of opposition to the European patent granted. Notice of opposition shall be filed in a written reasoned statement. It shall not be deemed to have been filed until the opposition fee has been paid. (Art. 99(1) European Patent Convention).

Description

The present invention relates to a method of driving a liquid crystal display element to display fast moving images.

In recent years, liquid crystal display elements have been noted as devices which are thin, light, compact and capable of displaying a large capacity of information, in place of CRTs. As driving methods to such liquid crystal display elements, they are mainly classified into two methods wherein each picture element of a twisted nematic type liquid crystal display element is driven by a thin-film transistor which is disposed in correspondence to each of the picture elements, and a twisted nematic type or a super-twisted nematic type liquid crystal display element is driven without using a thin-film transistor (a simple matrix type).

Although the liquid crystal display element with a thin film transistor can be driven at a relatively high speed, there is a problem that manufacturing steps for preparing the element are complicated and manufacturing cost is high. On the other hand, although manufacturing steps for the simple matrix type liquid crystal display element are relatively simple, there is a problem that it is difficult to switch a display picture at a high speed, whereby it is difficult to obtain a quick response in a display with a mouse at a terminal device when displaying video images.

The reason why it is difficult to drive the simple matrix type liquid crystal display element satisfactorily at a high speed is because the time required for orienting the liquid crystal molecules is large when a voltage is applied to the liquid crystal, which is inherent in the characteristics of the twisted nematic type or the super-twisted nematic type liquid crystal display element. Namely, in such liquid crystal display element having an average response time of about 250 msec, it is impossible to switch a display element or pixel at 20 Hz - 30 Hz (which corresponds to a switching time of 33-50 msec) which is generally required in video display.

For high-speed driving, it is considered to use a liquid crystal element having a low response time to a voltage applied to liquid crystal. Such liquid crystal element is called a fast response type liquid crystal element. In order to obtain such fast response type liquid crystal element, there are such a method of using liquid crystal having a low viscosity and such a method that the thickness of the liquid crystal layer is reduced by using liquid crystal having a large refractive index anisotropy.

The response time of the super-twisted nematic type liquid crystal display element is generally in proportion to the viscosity η of the liquid crystal used and is in proportion to the square of the thickness d of the liquid crystal layer used. On the other hand, in consideration of the demand that the product of the refractive index anisotropy Δn of the super-twisted nematic type liquid crystal display element and the thickness d of the liquid crystal layer should be substantially constant, the response time of the liquid crystal display element is in proportion to the viscosity η and is in inverse proportion to the square of the refractive index anisotropy Δn . Namely, it is preferable that the thickness d of the liquid crystal layer is small, and liquid crystal having a low viscosity and a large refractive index anisotropy is used for the liquid crystal element.

However, even though a fast response type liquid crystal element can be obtained in a manner as described above, use of such element has encountered an extremely large problem, which is described below. Generally, a method called optimized amplitude selective addressing method (e.g. "LIQUID CRYSTAL TV DISPLAYS" by E. Kaneko, 1987, published by KTK Scientific Publishers) has been used for driving a simple matrix type liquid crystal display element. In the waveform of a voltage applied to line electrodes in the optimized amplitude selective addressing method wherein the number of scanning lines (the number of row electrodes) is N and the frame period is T_F , there is a single selection pulse in the frame period T and a bias wave having a amplitude, which is $1/b$ as high as an ON voltage selection pulse, in a time other than the application of the selection pulse. Namely, a time of T_F/N is assigned to in a selection time period and a time of $(N-1)T_F/N$ is assigned to a non-selection time period. In Figure 5a, a symbol A shows a typical waveform of a voltage applied, wherein the abscissa represents time and the ordinate represents voltage. In many cases, two frames are used so as to form an a.c. voltage (d.c. free operation).

In the optimized amplitude selective addressing method, the response characteristic of liquid crystal molecules is effected by the r.m.s. value of the applied voltage to thereby be obtainable a predetermined contrast ratio of display. In Figure 5b, a symbol C shows a curve of effective value to which the liquid crystal molecules are responsive to the applied voltage wherein the abscissa represents time and the ordinate represents the intensity of transmitting light in a case that polarization plates are arranged at both sides of the liquid crystal layer and an ON voltage is applied to the column electrodes at the time of selection of the line electrodes. Generally, a frame period of about 10 msec - several 10 msec is used, whereas the average response time of a normally used liquid crystal display element is about 250 msec. Accordingly, switching a single pixel of ON or OFF is completed by using several numbers of frames through ten and several numbers of frames.

When a fast response type liquid crystal display element is driven, a change in the direction of the axis of the liquid crystal molecules is apt to follow to the amplitude of voltage applied to the liquid crystal. Accordingly, the transmission of light through the cell as indicated by a wave B in Figure 5b, the liquid crystal molecules are responsive to peak values, which does not follow the curve C of the integrating responsive characteristic. Namely, there causes a problem that the optical transmission through the cell which rises in a selection time period attenuates in a non-selection time

EP 0 522 510 B1

period, whereby the average transmittance level decreases and hence the contrast ratio also decreases. Hereinafter, such phenomenon is called the "relaxation" of liquid crystal.

The relaxation phenomenon causes a serious problem when the number of rows multiplexed (N) is several hundreds or more and a liquid crystal display element having a average response time of about 150 msec or lower is used. In particular, it is considerable when the multiplexing is conducted to a liquid crystal display element having a average response time of about 100 msec or lower.

In this specification, the average response time of a liquid crystal display element is defined as follows.

When a light transmission degree on the application of an OFF voltage at the time when a sufficient time has passed is represented as T_{OFF} , a light transmission degree on the application of an ON voltage is as T_{ON} , the time of switching from the OFF voltage to the ON voltage is as t_1 , the time when the light transmittance degree T becomes $(T_{ON} - T_{OFF}) \times 0.9 + T_{OFF}$ after the switching time is T_2 , the time of switching from the ON voltage to the OFF voltage again is as t_3 , and the time when the light transmission degree T becomes $(T_{ON} - T_{OFF}) \times 0.1 + T_{OFF}$ after the second switching time is as t_4 , the average response time τ is expressed as follows:

$$\tau = ((t_4 - t_3) + (t_2 - t_1))/2$$

In order to suppress the relaxation phenomenon, it is considered to utilize a method of increasing the frame frequency to thereby shorten time intervals between selection pulses. In this case, however, a time to select a single line electrode (a pulse width) is necessarily short, and therefore, the reaction of the liquid crystal molecules to the selection pulses is delayed. Accordingly, effect of increasing the contrast ratio of a display is not large.

Further, when the magnitude of a frequency for driving is large, the resistance value of the electrodes is not negligible, so that there causes brightness nonuniformity in a display between a signal inputting portion of an electrode and the other portion, or there causes brightness nonuniformity in a display because of a change of V_{th} with frequency. For the above-mentioned reasons, it was difficult to use the fast response type liquid crystal display element for the purpose of displaying good images.

On the other hand, T.N. Ruckmongathan proposes a method called Improved Hybrid Addressing Technique wherein a plurality of row electrodes are selected simultaneously or as a batch to drive them (hereinafter, referred to as IHAT method) in order to reduce a driving voltage and to minimize brightness nonuniformity in a display (1988 Internal Display Research Conference). A summary of the driving method is as follows.

An N number of line electrodes are divided into a p number ($p = N/M$) of subgroups each consisting of an M number of line electrodes, and the M number of line electrodes are selected as a batch to drive them.

A display information of an optional row of column electrodes in a selected subgroup is represented by an M-bit code $[d_{KM+1}, d_{KM+2}, \dots, d_{KM+M}]$; $d_{KM+j} = 0$ or 1 (where 0 designates OFF and 1 designates ON, and k is an integer changeable from 0 to (p-1) in a selected subgroup).

A selection pattern for the line electrodes is expressed by an M-bit code (W_1, W_2, \dots, W_Q) of $2^M (=Q)$ kinds, i.e., $[a_{KM+1}, a_{KM+2}, \dots, a_{KM+M}]$; $a_{KM+j} = 0$ or 1.

The driving is conducted as follows.

- (1) A subgroup is selected as a batch.
- (2) An M-bit code is selected as a selection pattern for the line electrodes.
- (3) When the line electrodes which are not selected are connected to the ground, the line electrodes selected are applied with $-V_r$ for logic 0 and $+V_r$ for logic 1.
- (4) A line electrode pattern for the selected subgroup and a data pattern are compared for each bit by using exclusive logical sum (exclusive OR) to thereby obtain a value of the exclusive logical sum of these data.
- (5) A mismatch number i of the two patterns is obtained from the exclusive logical sum.
- (6) When the mismatched number is i, a voltage applied to the column electrodes is selected to be V_i .
- (7) The voltage applied to the column electrodes is determined independently by repeating the steps (4) - (6) in the matrix.
- (8) The voltage is applied to the line electrodes and the column electrodes simultaneously during a time T_R .
- (9) A selection pattern is newly selected for the line electrodes, and a voltage applied to the column electrodes is determined through the steps (4) - (6). In the same manner as above, the voltage is applied simultaneously to another line electrodes and column electrodes during a time T_R .
- (10) A cycle is completed when a 2^M number of selection patterns are selected once for all subgroups.
- (11) A display is refreshed by repeating continuously the cycle.

In particular, when equations:

EP 0 522 510 B1

$$V_i = V_0(M-2i)/M,$$

and

$$V_r = V_0 N^{1/2}/M$$

are selected, the ON/OFF ratio of root mean square (r.m.s.) value of voltage can be largest. In this case, the ratio of the root mean square voltage of ON and OFF is expressed by:

$$V_{ON}/V_{OFF} = ((N^{1/2} + 1)/(N^{1/2} - 1))^{1/2}$$

The value obtainable is equal to V_{ON}/V_{OFF} which is obtainable by using the conventional optimized amplitude selection method. Further, the effective value of voltage at each operating portion in the matrix becomes uniform, whereby a uniform display can be obtained regardless of display patterns.

While the IHAT is effective for reducing the brightness nonuniformity of display, the number of time intervals to complete a cycle is long and hence is not suitable for gray shades using a technique similar to frame modulation. In this case, when the number of row electrodes selected is increased, the number of selection pulses required is some-times increased as an exponential function. If the width of a selection pulse is uniform, a display requires a time $2^{M-1}/M$ times as much as the conventional method. For instance, if $M = 7$, then $64/7$, i.e. a time of 9.1 times is required.

It is an object of the present invention to eliminate the problems of the conventional driving method and to provide a new driving method for a liquid crystal display element.

In accordance with the present invention as defined in claim 1, there is provided a driving method of a matrix type liquid crystal display element comprising at least $J \times L$ number (J and L are respectively integers of 2 or more) of row electrodes and a plural number of column electrodes wherein,

said $J \times L$ number of row electrodes are divided into a J number of row electrode subgroups each comprising an L number of row electrodes so that said subgroups are selected as each batch to be driven;

when voltages are applied to the row electrodes, either a voltage level of $+V_r$ or $-V_r$ (where $V_r > 0$) is applied at a selection time, when a voltage at a non-selection time is 0 (zero);

voltages applied to the column electrodes are selected from an $(L + 1)$ number of voltage levels of V_0, V_1, \dots, V_L (where $V_0 < V_1 < \dots < V_L$); and

when a two-valued information of the j -th row electrode subgroup (j is an integer of any of 1 through J) in a specified column in the plural column electrodes is expressed by a column vector D_j having an L number of elements (where the elements of the vector D_j comprises 1 indicating ON and 0 indicating OFF), the following conditions are satisfied: (1) said j -th row electrode subgroup is selected by applying sequentially voltages so that the elements of a selection voltage vector which constitute a row selection voltage, as defined in the following items (a) and (b), correspond to voltages to the row electrodes constituting the j -th line electrode subgroups:

(a) an orthogonal matrix $A=[\alpha_1, \alpha_2, \dots, \alpha_q, \dots, \alpha_k]$ (where α_q is a column vector having an L number of elements) comprising L rows and K columns, which has an element of $+V_r$ or $-V_r$ and in which the product of a matrix and a transposed matrix of the same assumes a scalar multiple of the unit matrix is selected (where K is an integer having a relation of $L \leq 2^p = K$ and p is a natural number), and

(b) as said row selection voltage, a selection voltage vector which includes at least one of $\alpha_1, \alpha_2, \dots, \alpha_k, -\alpha_1, -\alpha_2, \dots, -\alpha_k$ is selected, and,

(2) when said j -th row electrode subgroup is selected under the above-condition (1), the voltage applied to the column electrodes to indicate a display information by means of the vector D_j are determined as in the following items (a) and (b):

(a) a vector β is formed by the selection voltages applied to the j -th row electrode subgroup where $+V_r$ represents 1 and $-V_r$ represents 0, and

(b) a voltage V_i (i is an integer of any of 0 through L) given by the sum of exclusive OR of the elements corresponding to the vector β and D_j is applied to the column electrodes.

Further, it is an object of the present invention to provide a driving method of liquid crystal display element as

described in the above wherein the display information of the j-th row electrode subgroup in a specified column of the plural column electrodes has a gradation of (U + 1) stages (where U is a natural number of 2 or more) in place of the two-valued information;

the selection vectors which constitute a row selection voltage comprise substantially each U number of $\alpha_1, \alpha_2, \dots, \alpha_k, -\alpha_1, -\alpha_2, \dots, -\alpha_k$ in which the selection voltage vectors are arranged in a row, are selected, and the selected vectors having the each U number are used to display a gradation display of (U + 1) stages by giving a specified ratio to the total U number of ON and OFF signs.

In drawings:

Figure 1 is a graph showing time sequential changes of electric potential of a row electrode subgroup comprising $R_1 - R_4$ in a case of applying the selection code shown in Table 1;

Figure 2 is a diagram showing a display pattern for a liquid crystal display element;

Figure 3 is a graph showing changes of voltages applied to column electrodes C_1, C_2, C_3, C_9 with the display pattern shown in Figure 2 in a case of applying the selection code shown in Table 1;

Figure 4 is graphs showing voltages applied to the electrodes $R_1 - C_9$ and $R_2 - C_9$ with the display pattern of Figure 2 in a case of applying the selection code shown in Table 1;

Figure 5 is graphs showing an integrating response characteristic and a relaxation phenomenon;

Figure 6 is a block diagram showing an example of a circuit for realizing the driving method of the present invention;

Figure 7 is graphs showing time sequential changes of voltages of a row electrode subgroup comprising $R_1 - R_4$ in a case of applying the selection code shown in Table 4;

Figure 8 is graphs showing time sequential changes of voltages of a row electrode subgroup comprising $R_1 - R_3$ in a case of applying the selection code shown in Table 6;

Figure 9 is graphs showing voltages applied to column electrodes C_1, C_2, C_3, C_9 with the display pattern of Figure 2 in a case of applying the selection code shown in Table 4;

Figure 10 is graphs showing voltages applied to the electrodes $R_1 - C_9$ and $R_2 - C_9$ with the display pattern of Figure 2 in a case of applying the selection code shown in Table 4;

Figure 11 is graphs showing voltage waveforms applied to column electrodes with display patterns in a case of applying selection code shown in Table 6;

Figure 12 is graphs showing waveforms of the difference of electric potential between the electrode R_3 shown in Figure 8 and an optional column electrode in cases of the entirely ON and OFF;

Figure 13 is a block diagram showing an example of a circuit for realizing the driving method of the present invention;

Figure 14 is a graph showing changes of the contrast ratios according to a conventional method and the present invention wherein the width of a selection pulse is changed; and

Figure 15 is an another graph showing changes of the contrast ratios in accordance with conventional method and the present invention wherein the width of a selection pulse is changed.

In the following, several embodiments of the present invention will be described in detail with reference to the drawings.

In the driving method according to the present invention, a plurality of row electrodes are selected as a batch in the same manner as the IHAT method. In this description, a group of row electrodes selected as a batch is called "a row electrode subgroup".

It is desirable that the number of row electrodes which constitute each of the row electrode subgroups is equal in order to simplify a driving circuit. However, since, in the construction of a typical cell, the total number of row electrodes is not equal to a multiple number of the row electrodes which constitute row electrode subgroups, it is sometimes impossible that the number of the row electrodes which constitute all row electrode subgroups is equal.

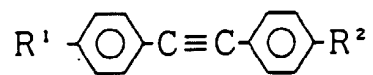
A case of driving row electrode subgroups each having an L number of row electrodes will be described (a case of driving row electrode subgroups in which some of row electrode subgroups have a fraction number of row electrodes will be also described).

In dividing the row electrodes into several row electrode subgroups, it is not always necessary to select adjacent row electrodes as a row electrode subgroup, but it is possible to select row electrodes at a position apart from another electrodes as a row electrode subgroup as far as there is no problem of wiring on a substrate.

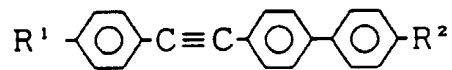
In the present invention, it is preferable to use a fast response type liquid crystal display element. As described before, such fast response type liquid crystal display element can be obtained by reducing the thickness (d) of the liquid crystal layer and by using liquid crystal having a low viscosity and a large anisotropy of refractive index. As the liquid crystal having a large anisotropy of refractive index, a tolan type liquid crystal component is useful, such tolan type liquid crystal component being disclosed in, for instance, Japanese Unexamined Patent Publication No. 5631/1986. Further, there are liquid crystal having features as shown in Chemical Formulas 1.

[Chemical Formulas 1]

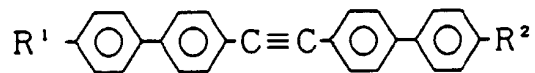
5



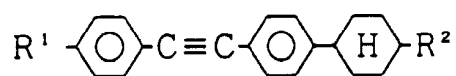
10



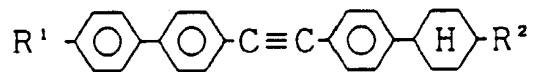
15



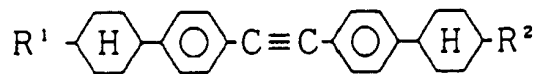
20



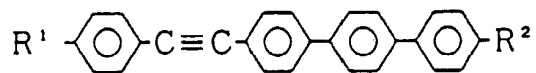
25



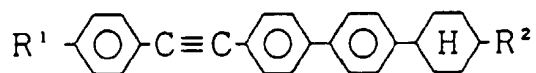
30



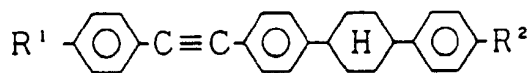
35



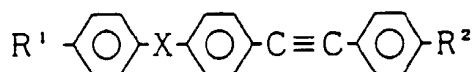
40



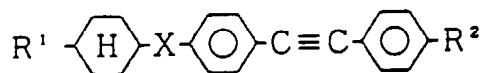
45

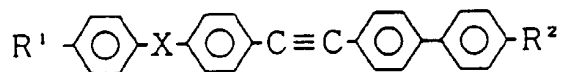


50

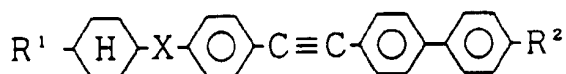


55

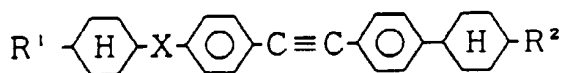




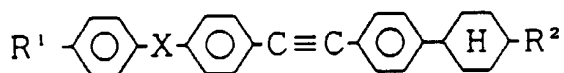
5



10



15



20

In the above chemical formulas, -X- is -COO-, -OCO-, -CH₂CH₂- or -C≡C-; and R¹ and R² are independently a C₁-C₁₀ alkyl group, a halogen atom, a cyano group or a -SCN group, provided that when R¹ and R² have a carbon-carbon bond, an oxygen atom may be inserted between the carbon-carbon bond or between the carbon and an adjacent ring, or a part of the carbon-carbon bonds may be substituted by -COO-, -OCO- or -CH=CH-. These compounds are simply for illustration, but there may optionally be selected various other materials, the hydrogen atom of which may be substituted by a halogen atom, a cyano group, a methyl group or the like.

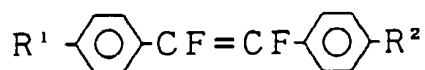
25

Further, as material having a large anisotropy of refractive index and a low viscosity, a difluorostilbene type liquid crystal is useful. As the difluorostilbene type liquid crystal, there are such liquid crystal components described in, for instance, Japanese Unexamined Patent Publication No. 96475/1989. Further, there are chemical structures shown in Chemical Formulas 2.

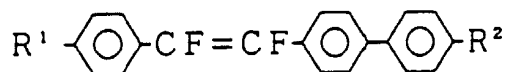
30

[Chemical Formulas 2]

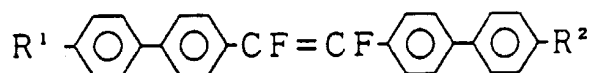
35



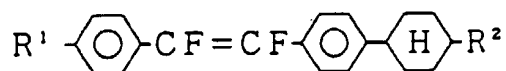
40



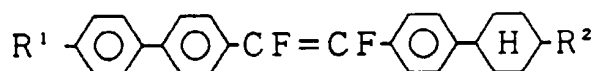
45

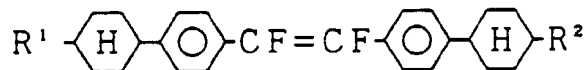


50

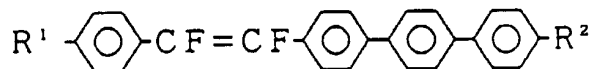


55

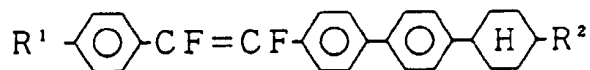




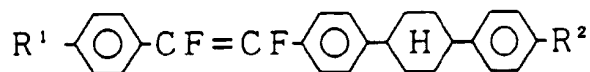
5



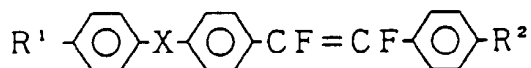
10



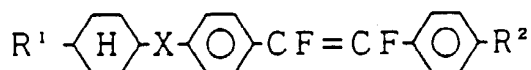
15



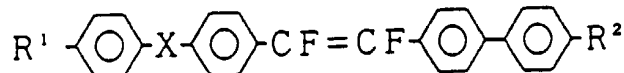
20



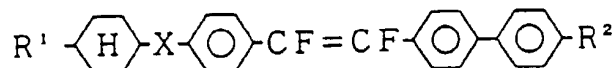
25



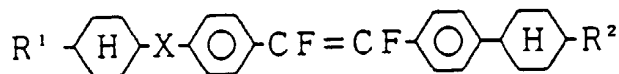
30



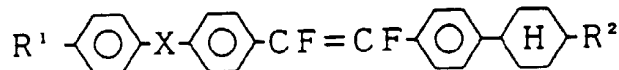
35



40



45



50

In the above chemical formulas, -X- is -COO-, -OCO-, -CH₂CH₂- or -C≡C-; and R¹ and R² are independently a C₁-C₁₀ alkyl group, a halogen atom, a -CN group or a -SCN group, provided that when R¹ and R² have a carbon-carbon bond, an oxygen atom may be inserted between the carbon-carbon bond or between the carbon and an adjacent ring, or a part of the carbon-carbon bonds may be substituted by -COO-, -OCO- or -CH=CH-. These compounds are simply for illustration, but there may optionally be selected various other materials, the hydrogen atom of which may be substituted by a halogen atom, a cyano group, a methyl group or the like.

55

The difluorostilbene type and the tolan type liquid crystal materials may be used separately or simultaneously. In particular, a liquid crystal composition containing 1-80% by weight of difluorostilbene, preferably 5-70% by weight,

more preferably 10-60% by weight can greatly reduce the viscosity and can realize a fast response.

In the present invention, voltages to be applied to line electrodes are either a voltage level of $+V_r$ or $-V_r$ ($V_r > 0$) in an selection time wherein voltages in a non-selection time is 0. In this case, the voltage of 0 in a non-selection time does not always mean grounding to the earth. A driving voltage to a liquid crystal element is determined by a voltage (a potential difference) applied between a line electrode and a column electrode. It is because a potential difference between the both electrodes is not changed by changing the potential of the both electrodes by the same quantity in parallel.

The voltages applied to a specified row electrode subgroup in a selection time can be expressed by vectors with L elements which are arranged time sequentially, the vectors having, as elements, voltages applied to each row electrodes. In this description, such matrices are called "selection voltage matrices", and the vectors which constitute the row select voltages are called "selection voltage vectors". Namely, if specified selection voltage matrices are determined, it is possible to select a row electrode subgroup in such a manner that the elements of the selection vectors which constitute the selection voltage matrices are made in correspondence to the voltages for each row electrodes, and the voltages corresponding to the selection voltage vectors which constitute the selection voltage matrices are sequentially applied to the row electrodes.

In the following, description will be made as to a method of forming the selection voltage matrices according to the present invention.

First of all, a matrix A of L rows and K columns: $A = [\alpha_1, \alpha_2, \dots, \alpha_q, \dots, \alpha_k]$ (where α_q is a column vector having an L number of elements) which has an element of $+V_r$ or $-V_r$ and in which the product of a matrix and a transposed matrix of the same assumes a scalar multiple of the unit matrix, is selected. In the matrix, K is an integer having a relation of $L \leq 2^p = K$, where p is a natural number. Describing specifically some examples, when L is 2, K is such that $K = 2$ ($p=1$), 4 ($p=2$), 8 ($p=3$), When L is 3 or 4, K assumes $K = 4, 8, 16, \dots$. Further, when L is 5, 6, 7 or 8, K assumes $K = 8, 16, 32, \dots$. However, when K is too large, the number of selection pulses necessary for the selection of line electrodes is also large. Accordingly, it is preferable that K assumes the smallest value among possible values.

Examples of the matrix A in which L = 4, 8 and K = 4, 8 respectively, are shown in the following Lists 1.

[Lists 1]

$$(a) \quad V_r \cdot \begin{bmatrix} 1 & 1 & 1 & 1 \\ 1 & -1 & 1 & -1 \\ 1 & 1 & -1 & -1 \\ 1 & -1 & -1 & 1 \end{bmatrix}$$

$$(b) \quad V_r \cdot \begin{bmatrix} 1 & 1 & 1 & -1 \\ 1 & 1 & -1 & 1 \\ 1 & -1 & -1 & -1 \\ -1 & 1 & -1 & -1 \end{bmatrix}$$

5

10

15

20

$$(c) \quad V_r \cdot \begin{bmatrix} 1 & 1 & 1 & 1 & 1 & 1 & 1 & 1 \\ 1 & -1 & 1 & -1 & 1 & -1 & 1 & -1 \\ 1 & 1 & -1 & -1 & 1 & 1 & -1 & -1 \\ 1 & -1 & -1 & 1 & 1 & -1 & -1 & 1 \\ 1 & 1 & 1 & 1 & -1 & -1 & -1 & -1 \\ 1 & -1 & 1 & -1 & -1 & 1 & -1 & 1 \\ 1 & 1 & -1 & -1 & -1 & -1 & 1 & 1 \\ 1 & -1 & -1 & 1 & -1 & 1 & 1 & -1 \end{bmatrix}$$

25

As a result of practicing several kinds of matrices, and especially when the matrices described in the above Lists 1(a) and (c) which are called an Hadamard's matrix were used, it was found that an advantage was obtainable in reducing the brightness nonuniformity of display when liquid crystal elements were driven. In the case of $L \neq 2^p$, the above-mentioned L-lines-K columns matrix A can be formed by removing an optional (K - L) line from a K-rows matrix wherein the product of a matrix and a transposed matrix of the same forms a scalar multiple of the unit matrix. The following Lists 2 show examples of the matrix A transformed from the 8-dimensional Hadamard's matrix shown in List 1(c), for instance.

30

[Lists 2]

35

40

45

$$(a) \quad V_r \cdot \begin{bmatrix} 1 & -1 & 1 & -1 & 1 & -1 & 1 & -1 \\ 1 & 1 & -1 & -1 & 1 & 1 & -1 & -1 \\ 1 & -1 & -1 & 1 & 1 & -1 & -1 & 1 \\ 1 & 1 & 1 & 1 & -1 & -1 & -1 & -1 \\ 1 & -1 & 1 & -1 & -1 & 1 & -1 & 1 \\ 1 & 1 & -1 & -1 & -1 & -1 & 1 & 1 \\ 1 & -1 & -1 & 1 & -1 & 1 & 1 & -1 \end{bmatrix}$$

50

55

$$(b) \quad V_r \cdot \begin{bmatrix} 1 & -1 & 1 & -1 & 1 & -1 & 1 & -1 \\ 1 & 1 & -1 & -1 & 1 & 1 & -1 & -1 \\ 1 & -1 & -1 & 1 & 1 & -1 & -1 & 1 \\ 1 & 1 & 1 & 1 & -1 & -1 & -1 & -1 \\ 1 & -1 & 1 & -1 & -1 & 1 & -1 & 1 \\ 1 & 1 & -1 & -1 & -1 & -1 & 1 & 1 \end{bmatrix}$$

List 2(a) shows a 7-row-8-column matrix formed by removing the first row from the matrix shown in List 1(c), and List 2 (b) is a 6-row-8-column matrix formed by removing the first and eighth rows from the matrix shown in List 1(c). In each of the matrices, the product of a matrix and a transposed matrix of the same assumes a scalar multiple of the unit matrix.

In the matrix A, each of the columns can be considered to be a single vector, whereby a formal expression of $A = [\alpha_1, \alpha_2, \dots, \alpha_q, \dots, \alpha_k]$ (where α_q is a column vector having an L number of elements) is made.

In the present invention, as the selection voltage matrices, matrices of vectors wherein the selection voltage vectors constituting the selection voltages are composed of at least $\alpha_1, \alpha_2, \dots, \alpha_k, -\alpha_1, -\alpha_2, \dots, -\alpha_k$, and these selection voltage vectors are arranged in matrices are selected.

If two values (i.e. ON and OFF) are used for displaying information to be described, selection voltage matrices consisting of a 2K number of vectors wherein each of the vectors appears once in the selected voltage matrices can be selected.

However, it is not always necessary that the selection voltage matrices are formed by selecting each one among the 2K number of vectors, but it is possible to add another vector composed of $+V_r$ or $-V_r$ as an element, or an arrangement of a plurality of same vectors as far as effect by the present invention is not adversely affected. For instance, an arrangement of selection voltage matrices including all possible conditions of electric potential (in this case, the number of selection voltage vectors in the selection voltage matrices is 2^L or higher) can be considered. For instance, if a single row electrode subgroup is formed of four row electrodes, there are 16 kinds of possible conditions of electric potential ($2^4 = 16$). Namely, selection voltage matrix include 16 selection voltage vectors. Accordingly, the voltages corresponding to the selection voltage matrix form a row electrode selection waveform for the driving method of the present invention.

In the above method, each of the row electrode subgroups has all possible electric potential conditions, whereby brightness nonuniformity in a display can be effectively reduced. However, when the value L becomes large, the number of selection pulses required for the selection of row electrodes increases in a form of exponential function, and if the pulse width is unchanged, a time required for completing a single display cycle becomes extremely long. In this sense, it is most preferable to select selection voltage matrices wherein the selection voltage matrices constituting the selection voltage matrices are composed substantially of $\alpha_1, \alpha_2, \dots, \alpha_k, -\alpha_1, -\alpha_2, \dots, -\alpha_k$, in an alignment form, and the number of the selection voltage vectors constituting the selection voltage rows is substantially 2K. Thus, the number of selection pulses necessary to select the row electrodes can be minimized, which is most effective for a fast response display.

The above description concerns a binary (two-valued) display. However, it is possible to realize a gradation display by using a similar method.

The order of an arrangement of the selection voltage vectors which constitute the selection voltage matrices is optional, and it is possible to replace the arrangement of the selection voltage vectors for each subgroup or a display information. In order to reduce the brightness nonuniformity of display in actual driving methods, it is sometimes preferred to conduct such replacement.

Hereinbelow, for simplifying explanation, there will be used a pattern wherein $+V_r$ as an element of the selection voltage vectors is expressed as "1" and $-V_r$ is expressed as "0", which is called "a selection pattern". Further, an arrangement of several selection patterns in a time sequential form is called "a selection code".

Now, explanation is made as to use of selection voltage matrix (a selection code) suitable for driving fast response

LCDs.

As a result of practically using several kinds of selection voltage matrices, it has been found it preferable in a view of reducing the brightness nonuniformity of display in liquid crystal display elements to carry out in such a manner that the number of selection voltage vectors in the selection voltage matrices is $2l$ (l is a natural number of $2l \geq 2K$), and the matrices consist of an l number of selection voltage vectors which form a former half portion and an l number of selection voltage vectors which form the later half portion wherein the former half and the latter half are the same in absolute value and opposite in positive and negative signs. Although the reason why the above-mentioned arrangement of vectors can reduce the brightness nonuniformity of display in driving the liquid display elements is not clear, it can be considered that a waveform of voltage resulted between electrodes in effecting a display exhibits a form of alternating voltage having a uniform frequency spectrum regardless of a display information. Hereinbelow, a selection code having such arrangement of the selection voltage vectors is called in particular "an inversion code".

Specifically describing, when a selection code consists of a $2l$ number of selection patterns, and there is considered two groups: a first group of the first l selection patterns and a second group of the $(l + 1)$ th - $2l$ th selection patterns, a selection code wherein the content of the s th selection pattern and the content of the $(s + 1)$ th selection pattern are in a negative relation should be used. Namely, a row electrode selection code should be formed so as to satisfy the relation as shown in List 3 when the s th selection pattern is expressed as W_s .

[List 3]

$$W_s = \overline{W_{s+1}}$$

(s is an integer of $1 - l$)

It was found for the inversion code to select rows of vectors having the order of $[\alpha_1, \alpha_2, \dots, \alpha_k, -\alpha_1, -\alpha_2, \dots, -\alpha_k]$ in order to reduce the brightness nonuniformity of display when the selection voltage matrices are formed of a $2K$ number of selection voltage vectors.

Table 1 shows an example of selection code for row electrodes which is formed from a 4×4 Hadamard's matrix.

[Table 1]

Selection pattern No.	1	2	3	4	5	6	7	8
Row electrode 1	1	1	1	1	0	0	0	0
Row electrode 2	1	0	1	0	0	1	0	1
Row electrode 3	1	1	0	0	0	0	1	1
Row electrode 4	1	0	0	1	0	1	1	0

The selection code of Table 1 satisfies that the selection voltage matrices have the order of $[\alpha_1, \alpha_2, \dots, \alpha_k, -\alpha_1, -\alpha_2, \dots, -\alpha_k]$. Further, selection codes shown in Tables 2 and 3 can be utilized in a case that a selection voltages (a selection pattern or patterns) are replaced for each subgroup. Numerical values in the Tables denote selection pattern numbers in Table 1. The selection patterns are applied to row electrodes time-sequentially from left to right. Table 2 shows that the selection patterns are changed after each row electrode subgroup has been selected. Table 3 shows that selection patterns are changed after every two row electrode subgroups are selected.

[Table 2]

Subgroup No. 1	1	2	3	4	5	6	7	8
Subgroup No. 2	2	3	4	5	6	7	8	1
Subgroup No. 3	3	4	5	6	7	8	1	2
Subgroup No. 4	4	5	6	7	8	1	2	3
Subgroup No. 5	5	6	7	8	1	2	3	4
..
..

[Table 3]

Subgroup No. 1	1	2	3	4	5	6	7	8
Subgroup No. 2	1	2	3	4	5	6	7	8

EP 0 522 510 B1

[Table 3] (continued)

Subgroup No. 3	2	3	4	5	6	7	8	1
Subgroup No. 4	2	3	4	5	6	7	8	1
Subgroup No. 5	3	4	5	6	7	8	1	2
..
..

Table 4 shows an example of an arrangement of the selection voltage matrices containing all possible conditions of electric potential. In Table 4, a selection code arranged in the natural binary code is shown. Further, four row electrodes are designated as a_1 , a_2 , a_3 and a_4 .

[Table 4]

No.	1	2	3	4	5	6	7	8	9	10	11	12	13	14	15	16
a_1	0	1	0	1	0	1	0	1	0	1	0	1	0	1	0	1
a_2	0	0	1	1	0	0	1	1	0	0	1	1	0	0	1	1
a_3	0	0	0	0	1	1	1	1	0	0	0	0	1	1	1	1
a_4	0	0	0	0	0	0	0	0	1	1	1	1	1	1	1	1

In the case of Table 4, a random code or a Gray code can be utilized other than the code according to the natural binary.

Further, a frequency equalizing code wherein a frequency of a row electrode selection waveform is equally applied to all row electrodes in a subgroup of the row electrodes. Table 5 shows an example of such frequency equalizing code wherein $L = 4$.

[Table 5]

No.	1	2	3	4	5	6	7	8	9	10	11	12	13	14	15	16
a_1	0	1	1	1	1	0	1	1	0	0	1	0	1	0	0	0
a_2	0	0	1	1	1	1	0	1	1	0	0	1	0	1	0	0
a_3	0	0	0	1	1	1	1	0	1	1	0	0	1	0	1	0
a_4	0	0	0	0	1	1	1	1	0	1	1	0	0	1	0	1

Table 6 shows an example of an inversion code formed of selection voltage matrices including all possible conditions of electric potential wherein $L = 3$.

[Table 6]

No.	1	2	3	4	5	6	7	8
a_1	0	1	0	1	1	0	1	0
a_2	0	0	1	1	1	1	0	0
a_3	0	0	0	0	1	1	1	1

In the above-inversion code, a negative form of the first - fourth line electrode selection patterns appears the 5th - 8th positions in that order.

On the other hand, if a display information is not constituted by using two values, but constituted by values which show a $(U + 1)$ stage gradation (U is an integer of 2 or more), an arrangement of the matrices of selection voltage vectors which constitute selection voltages, include at least each $U \times 2K$ number of vectors among $\alpha_1, \alpha_2, \dots, \alpha_k, -\alpha_1, -\alpha_2, \dots, -\alpha_k$, is selected as the selection voltage matrices.

In the same manner as the case of using the two-valued displaying system, it is not always necessary that the section voltage matrices consist of each $2KU$ number of vectors, but it is possible to add another vector as an element consisting of $+V_r$ or $-V_r$, or to use an arrangement of a $2KU$ or more number of the same vectors, as far as the effect according to the present invention is not adversely affected.

Further, if the selection voltage matrices are substantially formed of each $2KU$ number of the above-mentioned vectors, the number of selection pulses necessary for selecting line electrodes can be reduced, which is preferred for a high speed driving. Particularly, when the selection voltage matrices are formed of only each $2KU$ number of the

vectors, the number of selection pulses necessary for selecting line electrodes can be minimized to perform a high speed display.

The order of arrangement of the selection voltage vectors which constitute the selection voltage matrices is also optional. A random arrangement of the selection voltage vectors or the replacement of an arrangement of the selection voltage vectors for each subgroup or each display information may be used. It is often preferred to perform the above-mentioned rearrangement or replacement for driving a display element to thereby suppress unevenness of display, in the same manner as the case of using the two-valued display system.

In the $(U + 1)$ stage gradation display, also, various arrangements of the selection voltage vectors which constitute the selection voltage matrices can be utilized. For instance, there are an arrangement of $[S, S, \dots, S, -S, -S, \dots, -S]$ where a matrix of vectors $[\alpha_1, \alpha_2, \dots, \alpha_k]$ is expressed as S so as to form a unit, or an arrangement of $[S, -S, S, -S, \dots, S, -S]$ may be utilized. In particular, it is preferable to use an arrangement of $[S, S, \dots, S, -S, -S, \dots, -S]$ from the viewpoint of suppressing flicker.

In the following, description will be made as to a timing of applying to each row electrodes selection pulses corresponding to the selection voltage matrices mentioned above.

When a liquid crystal display element is driven to switch a pixel at a high speed, it is desirable to use fast response type liquid crystal display element in order to obtain a quick change in the transmission of light in the display element. In this case, there causes such a problem that the orientation of the liquid crystal molecules are relaxed when selection pulses are not applied to the liquid crystal molecules, as described before. Such problem becomes serious when the average response time of a liquid crystal display element is 150 msec or lower in a case that a multiplexing is conducted to the liquid crystal display element when the number of rows multiplexed is several hundreds or more. In particular, it is serious in a liquid crystal display element having an average response time of 100 msec or lower when it is subjected to multiplexing.

In order to suppress such relaxation of liquid crystal, it is preferred to change the length of the non-selection time period wherein no selection voltage is applied to row electrodes. Specifically, the change can be conducted according to the method of the present invention in such a manner of dispersively applying selection pulses during the scan period.

In accordance with this method, the voltages corresponding to the selection voltage matrices are not applied continuously to a single row electrode subgroup, but the scanning is divided into several stages in a manner that after selecting a row electrode subgroup, the next row electrode subgroup is selected.

Specifically, the following sequential steps are used.

A predetermined number of row select vectors are applied continuously to select each row electrode subgroup before selecting the next subgroup with the same number of row select vectors. A cycle is completed when all the subgroups have been selected using all the vectors in the row selection matrix once.

Thus, it is possible to change the length of the non-selection time period wherein a selection voltages are not applied to the row electrodes.

In the conventional optimized amplitude selective addressing method, two selection pulses having different polarity are applied to row electrodes during scanning so as to obtain d.c.-free operation of the display. Accordingly, two selection pulses are used in a cycle.

On the other hand, according to the present invention, the number of selection pulses corresponds to the number of stages by which the selection voltage matrices are splitted. Accordingly, when the selection voltage matrices are divided into three or more, the number of the selection voltage pulses appearing during scanning period can be much more than that of the conventional method.

Further, it is extremely preferable to equalize the number of selection voltage vectors included in each stage, which is not essential to the present invention although. However, it is effective to simplify the construction of the driving circuit.

The length of the non-selection time in which the selection voltages are not applied to the row electrodes can be changed according to the fast response characteristic of the liquid crystal display element. In general, an increase of the number of stages divided in the selection voltage matrices reduces the non-selection time, which is effective to suppress the relaxation phenomenon in liquid crystal display. In other words, if the number of selection pulses is increased by dividing, it is easy to maintain the light transmission through the cell to nearly a constant value. Accordingly, the most preferable way which can prevent the reduction of an average level of transmittance and the reduction of the contrast ratio is to give a single selection voltage vector in each stage.

For simplification, description will be made mainly as to the above-mentioned case.

In the present invention, the total number (N) of row electrodes are selected to perform a two-valued display to form several groups each having an L number of row electrodes, the minimum number of selection pulses to be applied to each row electrodes for a cycle is $2K \cdot (N/L)$, which is substantially equal to $2N$ in number in the conventional method. Accordingly, if the both methods have the same cycle time, the width of the selection pulses forming a selection pattern is the same between the both methods. On the other hand, in view of each of the row electrodes, the number of selection pulses applied to the row electrode for a display is $2L$ when $L = 2^p$ (p is an integer). If the total number $(2L)$ of selection pulses are applied to the row electrodes in a dispersed form, a non-selection time wherein a no selection voltage is

applied to the row electrodes can be reduced to $1/L$ in comparison with that by the conventional method. Namely, the feature of the method of the present invention is to increase the number of selection pulses without changing substantially the width of the selection pulses.

Figure 1 shows row waveforms applied to certain row electrodes in accordance with the selection code shown in Table 1 wherein $R_1 - R_4$ represent row electrodes, and a time interval T is a time interval between two row select pulses in a case that row electrodes having the total number N are divided into several row electrode subgroups each having an L number of row electrodes.

Figure 7 shows row waveforms applied to a row electrode subgroup $R_1 - R_4$ consisting of 4 row electrodes in accordance with the selection code shown in Table 4. As is clear from Figure 7, it is understood that a selection pulse appears for each scan of 100 subgroups (i.e. scanning is conducted to 400 row electrodes). Figure 8 shows time-sequentially changing voltages applied to a row electrode subgroup $R_1 - R_3$ in accordance with the selection code shown in Table 6, which is shown in the same manner as Figure 1. In this case, the total number of the line electrodes is $N = 240$.

In the following, description will be made as to voltages applied to column electrodes to display a specified display information where a specified line electrode subgroup is selected under the condition as described above.

In the present invention, an $(L + 1)$ number of voltage levels are used, and voltages selected from the $(L + 1)$ number of voltages in accordance with a selection pattern for a line electrode subgroup are applied to column electrodes to drive them. As described before, since a voltage waveform should be in a form of alternating voltage in order to ensure a long life of the display, the $(L + 1)$ number of voltage levels preferably have voltages: V_0, V_1, \dots, V_L which satisfies at least the following condition: $V_0 < V_1 < \dots < V_L$.

Selection of a voltage level among the above voltage levels is determined in consideration of a display information and selection voltages applied to the line electrodes. A method of determination of a suitable voltage level will be explained later.

Since the voltage waveform is preferably in a form of alternating voltage, V_i is determined as $V_L - i$. It is possible to shift the voltages applied to the row electrodes and the column electrodes by the same amount together since there is no net change of electric potential difference between these electrodes.

Further, the absolute value of each of the voltage levels V_0, V_1, \dots, V_L should be determined depending on the construction of a liquid crystal display element and other factors.

In the following, selection of a voltage to be applied to electrodes from the $(L + 1)$ number of voltage levels wherein a specified display pattern is provided, will be described.

First of all, in a case that a display information is constituted by a two-valued system will be described. Figure 2 shows a part of a display pattern, as a form of model, of a matrix having 400 row electrodes. Data in a Table which is shown in the lower part of Figure 2 correspond to the display pattern of the matrix in the upper part of Figure 2 wherein ON represents 1 and OFF represents 0. When 4 row electrodes are selected as a batch, the data in the column electrodes are divided into several subgroups, each consisting of 4-bit data patterns. The display data of j th row electrode subgroup (j is an integer having $1 - J$) is expressed by a column vector D_j having 4 number of elements (where the elements of the vector D_j consist of 1 representing ON and 0 representing OFF). For instance, the column vector of the column electrode C_9 is $D_1 = t(d_1, d_2, d_3, d_4) = t(1, 0, 1, 0)$ where t represents transposition.

For determining a voltage applied to a column electrode, vectors (β) of a selection pattern of selection voltages applied to the row electrodes and vectors of a display data for the column electrodes are used and exclusive OR is applied to each elements corresponding to these vectors to thereby obtain the sum. For instance, when the selection voltages of the first subgroup of the row electrodes in Figure 2 are expressed by a selection patten of $[1, 1, 1, 1]$, voltages to be applied to the column electrode C_9 in Figure 2 is determined. Then, the sum of the exclusive OR operation is expressed by List 4.

[List 4]

$$i = (\bar{1} \cdot 1 + 1 \cdot \bar{1}) + (\bar{0} \cdot 1 + 0 \cdot \bar{1}) + (\bar{1} \cdot 1 + 1 \cdot \bar{1}) + (\bar{0} \cdot 1 + 0 \cdot \bar{1}) = 0 + 1 + 0 + 1 = 2$$

The voltage level to be applied to the electrode is expressed by V_i when i is obtained.

For instance, Table 1 is selected for the selection code for the row electrodes. In a case of displaying the display pattern shown in Figure 2, voltages applied to the column electrodes C_1, C_2, C_3 and C_9 are shown in Figure 3. In Figure 3, an area indicated by $R_1 - R_4$ means an area showing a change of voltage in a time period in which the row electrode subgroup $R_1 - R_4$ is selected. In Figure 3, each area $R_1 - R_4, R_5 - R_8$ or $R_9 - R_{12}$ is independently depicted. Further, for easy view, the time axes (abscissa) is shown by eliminating selection time periods of other subgroups. Therefore, it should be understood that when selection pulses are dispersively applied to the electrodes, the voltages are not continuously applied. Namely, there is an application of a voltage as shown in Figure 2, and, then, voltage applications

are conducted to other row electrode subgroups, and after a time of the voltage application to the other line electrode subgroups has passed, a next voltage application is conducted.

When the maximum value of column electrode voltage is V_c and if $V_i = V_c (2_i-L)/L$ and $V_r = V_c N^{1/2}/L$ (where N is the total number of line electrodes) are selected, V_{ON}/V_{OFF} of the effective value of voltage can be preferably maximized. Further, it is possible to adjust the levels of V_r and V_i so as to obtain a desired contrast ratio near the value regardless of the above-mentioned conditions.

In Figure 2, when $L = 4$, a group of $V_4 = +V_c$, $V_3 = +V_c/2$, $V_2 = 0$, $V_1 = -V_c/2$ and $V_0 = -V_c$ may be selected. Further, $V_r = 5V_c$ under the above-mentioned conditions. Figure 4 shows a change of voltage of $R_1 - C_9$ (an ON state) and $R_2 - C_9$ (an OFF state) in Figure 2 in such case wherein the time axes (abscissa) is depicted by removing selection time periods for other subgroups for easy view in the same manner as Figure 3.

When a display information is displayed and attention is paid to a specified line electrode subgroup, it is sometimes effective to reduce the brightness nonuniformity of display by changing an arrangement of the selection voltage rows (selection pattern) each time when one or a plurality of displays are finished. In particular, it is preferable to reduce the brightness nonuniformity of display by using such a technique that the selection voltages applied to each line of the line electrodes are substituted for those applied to the corresponding line electrodes in a specified subgroup. Namely, a matrix which is formed by replacing a line electrodes in a matrix A used for forming the selection voltage rows for a former display information, is used again as a matrix A for forming selection voltage rows.

Specifically, when the selection code shown in Table 1 is used for the first time, the selection codes as shown in Tables 7, 8 and 9 may be used subsequently each time a display information is changed. The selection code of each Table is formed by shifting the selection voltages applied to respective line electrodes.

[Table 7]

Selection pattern No.	1	2	3	4	5	6	7	8
Row electrode 1	1	0	1	0	0	1	0	1
Row electrode 2	1	1	0	0	0	0	1	1
Row electrode 3	1	0	0	1	0	1	1	0
Row electrode 4	1	1	1	1	0	0	0	0

[Table 8]

Selection pattern No.	1	2	3	4	5	6	7	8
Row electrode 1	1	1	0	0	0	0	1	1
Row electrode 2	1	0	0	1	0	1	1	0
Row electrode 3	1	1	1	1	0	0	0	0
Row electrode 4	1	0	1	0	0	1	0	1

[Table 9]

Selection pattern No.	1	2	3	4	5	6	7	8
Row electrode 1	1	0	0	1	0	1	1	0
Row electrode 2	1	1	1	1	0	0	0	0
Row electrode 3	1	0	1	0	0	1	0	1
Row electrode 4	1	1	0	0	0	0	1	1

A typical driving method of the present invention to display a two-valued display information will be described wherein the number of row electrodes selected as a batch is 4 ($L = 4$), and the number of line electrode subgroups is J.

A basic selection code is previously determined. The selection code shown in Table 1 is used here.

First, the selection pattern number 1 of Table 1 is applied to the first row electrode subgroup. At the same time, voltages determined from this selection pattern and display data are applied to each and every column electrode. Then, the selection pattern number 2 of Table 1 is applied to the second line electrode subgroup. At the same time, this selection pattern and voltages determined from the second selection pattern and display data are applied to every column electrodes. Then, the selection pattern number 3 of Table 1 is applied to the third row electrode subgroup. Each of the row electrodes and column electrodes are applied with the voltages in the same manner as above. The above-mentioned steps are repeatedly conducted to the subsequent row electrode subgroups until the J th subgroup.

EP 0 522 510 B1

Then, the selection pattern number 2 of Table 1 is applied to the first row electrode subgroup. Then, the selection pattern number 3 of Table 1 is applied to the second row electrode subgroup. These steps are repeatedly conducted to the subsequent subgroups until the J th subgroup.

Thus, the selection patterns of Table 1 are sequentially applied to each of the row electrode subgroups until all patterns are applied, whereby a display is completed.

In the next cycle, the selection code of Table 7 is used which is formed by interchanging the rows of Table 1.

In the subsequent cycle, the selection code of Table 8 is used. Then, in the next cycle, the selection code of Table 9 is used. After this operation, the selection code of Table 1 is used. Thus, the selection codes are sequentially used in successive cycles.

For instance, when the display pattern of Figure 2 is to be displayed and if the selection code of Table 4 is selected, voltages applied to column electrodes C_1, C_2, C_3, C_9 are as in Figure 9. In Figure 9, an area $R_1 - R_4$ represents a time period in which a row electrode subgroup $R_1 - R_4$ is selected. The area $R_1 - R_4$ and other areas $R_5 - R_8$ and $R_9 - R_{12}$ are shown independently. For easy view, the time axes (abscissa) are depicted without showing time periods for selecting other subgroups. Therefore, in the present invention, when the selection pulses are applied dispersively, voltages are not continuously applied. Namely, after a voltage is applied as shown in Figure 9, voltages are applied to other row electrode subgroups. When a time necessary for applying the voltages to other subgroups has passed, another voltage is applied as shown in the figure. This is conducted in the same manner as Figure 3.

Figure 10 shows a change of voltage with respect to $R_1 - C_9$ (an ON state) and $R_2 - C_9$ (an OFF state) in Figure 2 wherein in the above-mentioned conditions, the voltage levels are selected as $V_4 = +V_c, V_3 = +V_c/2, V_2 = 0, V_1 = -V_c/2$ and $V_0 = -V_c$, and $V_4 = 5V_c$ is selected. In the same as Figure 9, the time axes (abscissa) are depicted by omitting time periods for selecting other 99 subgroups which is in a non-selection state, in Figure 7.

The following description concerns a case of selecting the selection code shown in Table 6.

As shown in Table 4, all possible states in the data patterns $D = (d_1, d_2, d_3)$ in a row electrode subgroup with respect to a single row of column electrodes are 8. An optional display pattern can be formed by the combination of 8 states.

Table 10 shows a result obtained by the calculation of a formula: $V_i = -V_0(2i - L)/L$, wherein i is the sum of exclusive OR for each bit of the line electrode selection patterns and the data patterns, and V_i corresponds to i , and the values of V_i are expressed only by coefficients of V_0 .

[Table 10]

C/R	d_3	0	0	0	0	1	1	1	1							
	d_2	0	0	1	1	1	1	0	0							
	d_1	0	1	0	1	1	0	1	0							
$a_3a_2a_1$	i	V_i	i	V_i	i	V_i	i	V_i	i	V_i	i	V_i	i	V_i	i	V_i
0 0 0	0	-1	1	-1/3	1	-1/3	2	1/3	3	1	2	1/3	2	1/3	1	-1/3
0 0 1	1	-1/3	0	-1	2	1/3	1	-1/3	2	1/3	3	1	1	-1/3	2	1/3
0 1 0	1	-1/3	2	1/3	0	-1	1	-1/3	2	1/3	1	-1/3	3	1	2	1/3
0 1 1	2	1/3	1	-1/3	1	-1/3	0	-1	1	-1/3	2	1/3	2	1/3	3	1
1 1 1	3	1	2	1/3	2	1/3	1	-1/3	0	-1	1	-1/3	1	-1/3	2	1/3
1 1 0	2	1/3	3	1	1	-1/3	2	1/3	1	-1/3	0	-1	2	1/3	1	-1/3
1 0 1	2	1/3	1	-1/3	3	1	2	1/3	1	-1/3	2	1/3	0	-1	1	-1/3
1 0 0	1	-1/3	2	1/3	2	1/3	3	1	2	1/3	1	-1/3	1	-1/3	0	-1

Based on Table 10, voltage waveforms to be applied to a row of column electrodes in a time period of selecting a

subgroup is determined, which is shown in Figure 11. An optional display is obtainable by the combination of 8 kinds of waveforms in Figure 11.

In particular, in view of a data pattern of entirely ON $((d_1, d_2, d_3) = (1, 1, 1))$ and a data pattern of entirely OFF $((d_1, d_2, d_3) = (0, 0, 0))$ with respect to a voltage waveform applied to R_3 in Figure 8, it is found that the same voltage is always applied after 4 stages. This is also applicable to data patterns other than the data patterns of entirely ON and OFF.

Namely, by using the inversion code which is obtained by rearranging the above-mentioned data, as a selection code, it is possible that electric potentials having the same absolute value are repeated twice in a time period for scanning a picture surface (hereinbelow, it is referred to as a frame period or a frame frequency as the reciprocal number of it).

When a display is turned to ON, the application of a voltage of $+(V_r + V_c)$ and a voltage $-(V_r + V_c)$ each having the greatest absolute value is most effective for the movement of the liquid crystal molecules. In this case also, the voltages correctly appear once in 4 stages, i.e. at a frequency twice of the frame frequency.

Namely, in the conventional optimized amplitude selective addressing method, the frequency in the optical response of the liquid crystal is equal to the frame period, however, the frame frequency can be substantially twice when the inversion code is used as a selection code in the driving method of the present invention. Accordingly, brightness in an ON state and the contrast ratio can be increased. Further, in any display pattern, the optical response period of the liquid crystal is constant, whereby a uniform display can be obtained.

When a display information is not shown by two values, but has a gradation degree having $(U + 1)$ stages (U is an integer of 2 or more), a display can be obtained in substantially the same manner as the case of two-valued display. In this case also, rows of vectors are selected as selection voltage matrices wherein the selection voltage vectors which constitute the selection voltage matrices are respectively composed substantially of $2KU$ number of the vectors among $\alpha_1, \alpha_2, \dots, \alpha_k, -\alpha_1, -\alpha_2, \dots, -\alpha_k$, and the selection voltage vectors are arranged in series.

The $(U + 1)$ stage gradation display can be performed by displaying the signs of ON and OFF having a U number in total at a predetermined ratio with respect to the selection voltage vectors each composed of a U number.

A case that $L = K = 4$ and a display having 4 degrees of gradation is performed, will be described. A selection code to be used is such one as shown in Table 11 which can be formed from a 4×4 Hadamard's matrix. In Table 11, the selection patterns are used from left to right. Further, each line of data arranged in the vertical direction corresponds to each row of row electrodes.

[Table 11]

Row 1	1 1 1 1	1 1 1 1	1 1 1 1	0 0 0 0	0 0 0 0	0 0 0 0
Row 2	1 0 1 0	1 0 1 0	1 0 1 0	0 1 0 1	0 1 0 1	0 1 0 1
Row 3	1 1 0 0	1 1 0 0	1 1 0 0	0 0 1 1	0 0 1 1	0 0 1 1
Row 4	1 0 0 1	1 0 0 1	1 0 0 1	0 1 1 0	0 1 1 0	0 1 1 0

Or, the selection code may be such one as shown in Table 12.

[Table 12]

Row 1	1 1 1 1	0 0 0 0	1 1 1 1	0 0 0 0	1 1 1 1	0 0 0 0
Row 2	1 0 1 0	0 1 0 1	1 0 1 0	0 1 0 1	1 0 1 0	0 1 0 1
Row 3	1 1 0 0	0 0 1 1	1 1 0 0	0 0 1 1	1 1 0 0	0 0 1 1
Row 4	1 0 0 1	0 1 1 0	1 0 0 1	0 1 1 0	1 0 0 1	0 1 1 0

In the above Tables, the same kind of patterns appear three times. A gradation display can be obtained by assigning the three selection patterns to ON or OFF. For instance, the data having two ONs and an OFF corresponds to the second degree of gradation from the ON side. Further, the data having an ON and two OFFs corresponds to the third degree of gradation from the ON side. The assignment of ON and OFF should be uniform to obtain good appearance.

In the following, a case that a row electrode subgroups consists of an L_r number of row electrodes which is smaller than an L number of row electrodes which constitute another row electrode subgroup, will be described. It is assumed that a $(L - L_r)$ number of row electrodes are added, whereby the total number of the row electrodes which constitute the regular row electrode subgroup is L . The row electrode subgroup is driven by applying voltages to the row electrodes and the column electrodes in the same manner as driving the regular row electrode subgroup. Specifically, when the subgroup consisting of an L_r number of row electrodes is driven, it is assumed that there are a $(L - L_r)$ number of row

electrodes which correspond to the L_r th, the $(L_r + 1)$ th, ..., the L th row electrodes, and display data for the assumed row electrodes are also prepared imaginarily. The display data may be formed of 0 or 1 in a two-valued display. The display data may be any degrees of gradation in a gradation display.

For instance, when a row electrode subgroup of $L = 4$ and $L_r = 3$ is driven, three row electrodes are used in a selection code which is formed in a case of $L = 4$. Specifically, if the selection code shown in Table 1 is used, a selection code for three lines which correspond to row electrodes 2 - 4 is used to apply selection pulses. It is not always necessary to select the three rows corresponding to the row electrodes 2 - 4, but a group of row electrodes 1 - 3 may be selected to apply the selection pulses.

The application of voltages to the column electrodes is determined as follows. Namely, with respect to a display information, the vectors D_i for the display information are prepared by adding an imaginary display information. On the other hand, with respect to the selection pattern, there is used a selection pattern for the selection code applied to an L number of row electrodes which has been used to form the selection code for an L_r number of row electrodes. Then, in the same manner as described before, exclusive OR operations are conducted to corresponding elements of the display information and the selection pattern to thereby obtain the sum i , whereby voltages to be applied to column electrodes are determined.

The above-description concerns the case that the L number of row electrodes which constitute a row electrode subgroup are real electrodes. However, it is possible to treat a part of the row electrodes as imaginary electrodes.

In this case, the number of selection pulses necessary for selection and the number of voltage levels to be applied to row electrodes become larger than minimum values with respect to the row electrodes which constitute real row electrode subgroups. However, this is sometimes advantageous when the voltage level to be applied to the column electrodes are used as voltage levels applied to other devices.

The driving method of the present invention is suitably applied to a twisted nematic liquid crystal display element, in particular to a so-called super-twisted nematic liquid crystal display element to which multiplied driving is applicable. The super-twisted nematic liquid crystal display element is so adapted to increase the twist angle of the liquid crystal molecules between both electrodes to cause a sharp change in the voltage - transmittance characteristic to thereby obtain a high density dot-matrix display. (T.J. Scheffer and J. Nehring, Appl., Phys., Lett. 45(10) 1021-1023 (1984))

The method proposed in the article has drawbacks as follows. Since the product value $\Delta n \cdot d$ of the birefringent index Δn of the liquid crystal and the thickness d of the liquid crystal layer of a liquid crystal display element is substantially in a range of $0.8 \mu\text{m} - 1.2 \mu\text{m}$ (Japanese Unexamined Patent Publication No. 10720/1985), a display having a good contrast ratio can not be obtained unless a specified combination of hue such as yellowish green and dark blue, bluish purple and pale yellow, and so on is used, and accordingly, it is impossible to provide a monochrome display. Further, it is impossible to obtain a multi-color or a full-color display by combining a multi-color filter.

In order to eliminate the above-mentioned problem, there is a proposal to obtain a liquid crystal display element capable of providing a monochrome display and having a high contrast ratio in which two layers of liquid crystal cells which have spiral structures opposite to each other are laminated and in which a voltage is applied to only one cell and the other cell is used merely as an optically compensating plate (Technology report of Television Association by Okumura et al, 11(27), p. 79, (1987)).

As another method, there is proposed a liquid crystal display element which comprises a liquid crystal layer including a nematic liquid crystal containing chiral material and a positive dielectric anisotropy and whose twisting angle is in a range of $160^\circ - 300^\circ$, the liquid crystal layer being interposed between a pair of substrates with transparent electrodes each having an orientation control film which are disposed in substantially parallel, and a driving means to apply a voltage across the transparent electrodes of the upper and lower substrates which hold the liquid crystal layer therebetween, wherein at least one birefringent plate and a pair of polarization plates are disposed at an outside of the liquid crystal layer.

According to this method, a light, compact monochrome display type liquid crystal element can be obtained. The driving method of the present invention is suitable for such liquid crystal display element.

Preferred examples of the present invention will be described.

Figure 6 is an example of a circuit used to realize the driving method of the present invention. The circuit is adapted to display 16 degrees of gradation. As display data, analogue signals are inputted for R, G, B colors separately. The signals are respectively inputted to 6-bit A/D transducers 1, 1, 1 for R, G and B to be converted into digital data. The converted digital data signals are corrected (so-called γ correction) at a corrector 2 so as to meet the optical characteristic of liquid crystal and are transformed into data indicating gradation having a predetermined bit number which is determined by a degree of gradation, the data being received in a display memory 3. Then, the data are read from the display memory 3 in a predetermined order, and are introduced into a data selector 4 where the data are assigned to an L number of subgroup memories, 5, 5, ..., 5. The L number of data are inputted to gradation controlling circuits 6, 6, ..., 6 where 15 cycles are collected together to form data of 1-bit - ON-OFF display data rows (L number), and the data are supplied to an exclusive OR/adder 7 where the exclusive OR of the L bit data and the L bit line electrode selection pattern which is supplied from a line electrode selection pattern generating circuit 11 are obtainable, and

subsequently an adding operation is conducted. The data from the adder 7 are supplied to a column electrode driver 8. The line selection pattern is delayed for a time corresponding to the selection of one line at a delay circuit 12 and is supplied to a line electrode driver 13. Each output from the line electrode driver 13 and the column electrode driver 8 is inputted to each electrodes of a liquid crystal panel 9. Reference numeral 10 designates a timing generating circuit.

Figure 13 is a diagram showing a circuit wherein a selection code including all possible states of electric potential is used.

Assuming that a liquid crystal display element having an N_1 number of row electrodes and an N_2 number of column electrodes is used, and the N_1 number of line electrodes are divided into subgroups each having an L number of row electrodes in order to select each of the subgroups as a batch. A display information is displayed by transferring α bit parallel data.

The formation of selection signals are conducted as follows.

First of all, a clock signal is generated from a pulse generator 31. The pulse train is inputted to a clock terminal of an address counter 32 to form a clock signal 34. The clock signal 34 is inputted to a clock terminal of an N_2 stage shift register 45. The pulse signal is also divided in the address counter 32 to generate a load signal 35. The load signal is supplied to a clock terminal of a subgroup counter 36, a clock terminal of a flip-flop 37, a load terminal of an N_2 stage data latch 46, clock terminals of an L bit latch 48 and a clock terminal of N_1/L stage shift register 49.

Further, the load signal 35 is divided in the subgroup counter 36 to be formed into an L/N_1 signal which is inputted to a data terminal of the flip-flop 37. The output of the flip-flop 37 is respectively inputted to a clock terminal of a row stage counter 39 and a data terminal of the signal N_1/L stage shift resistor 49. The output of an L bit signal from the row stage counter 39 is inputted to each data terminal of the L bit data latch 48 directly or after the signal has been transformed into a gray code or any other code as necessary.

The outputs of the L bit data latch 48 and the output of the N_1/L stage shift register 49 are inputted to an N_1 -bit-3-level driver 50 from which an N_1 number of outputs are generated and they are inputted to row electrodes of a liquid crystal panel 51.

ON and OFF signals corresponding to the data of a display information are prepared as follows. Data 40 are sequentially written as α -bit data in L number of RAMs 41, 41, ..., 41 for rows of $Lk + 1$, $Lk + 2$, ..., $Lk + L$ ($k = 0, \dots, N_1/L - 1$). On the other hand, the output of address counter 32 is inputted as an RAM address signal 33 to each of the L number of the RAMs 41, 41, ..., 41 in Figure 13.

The data of the display information are simultaneously read from the L number of the RAMs 41, 41, ..., 41. An exclusive OR operation is conducted on the read-out data and the value of the corresponding row select pattern of the row stage counter 39, followed by summing a resulted value at an exclusive OR/adder 44 to thereby obtain g-bit data. The resulted g-bit data are inputted to the data terminal of the N_2 stage shift register 45 in which the data are sequentially shifted in accordance with the clock signal 34 to form complete N_2 stage data. When the complete data are formed, they are supplied to the N_2 stage latch 46 and are memorized when the load signal 35 is inputted. The output of the N_2 stage latch 46 is inputted to an N_2 number of $L + 1$ level drivers 47. An N_2 number of outputs of the $L + 1$ level drivers 47 are respectively inputted to column electrodes of the liquid crystal panel 51.

[EXAMPLE 1]

A STN liquid crystal display element having an average response speed of 50 msec (25°C) was prepared by using the circuit structure as above-mentioned in which the number of the line electrodes was 490 and a selection of $L = 7$, $J = 70$ and $K = 8$ was made. The liquid crystal display element was driven in accordance with the driving method of the present invention wherein the width of selection pulses for a selection pattern was changed. As a result, the highest contrast ratios were obtained at 25°C as shown by triangular marks in Figure 14.

The liquid crystal used contained 30 wt% of difluorostilbene type liquid crystal and 43 wt% of tolan type liquid crystal, and as the characteristics of the liquid crystal as a whole, it shows 0.237 of refractive index anisotropy Δn , 12.1 cSt of viscosity η and 86.7°C of transparent point T_c . The thickness d of the liquid crystal layer was $3.7 \mu\text{m}$.

In driving the liquid crystal display element, the selection code shown in Table 13 was used, which was a modification of a selection code formed from an 8×8 Hadamard's matrix as shown in Table 14 and which was a selection code corresponding to row electrodes 2-row electrodes 8. Further, in driving, whenever a selection pattern was applied to a row electrode, the next row electrode subgroup was applied, and $V_i = -V_0(L-2i)/L$ and $V_r = V_0N^{1/2}/L$ were selected, whereby adjustment was made so as to obtain the highest contrast ratio in the absolute value of voltage. In Examples described below, whenever a selection pattern was applied to a row electrode, the next row electrode subgroup was applied.

[Table 13]

	1	2	3	4	5	6	7	8	9	10	11	12	13	14	15	16
5 Row 1	1	0	1	0	1	0	1	0	0	1	0	1	0	1	0	1
Row 2	1	1	0	0	1	1	0	0	0	0	1	1	0	0	1	1
10 Row 3	1	0	0	1	1	0	0	1	0	1	1	0	0	1	1	0
Row 4	1	1	1	1	0	0	0	0	0	0	0	0	1	1	1	1
Row 5	1	0	1	0	0	1	0	1	0	1	0	1	1	0	1	0
15 Row 6	1	1	0	0	0	0	1	1	0	0	1	1	1	1	0	0
Row 7	1	0	0	1	0	1	1	0	0	1	1	0	1	0	0	1

20

[Table 14]

	1	2	3	4	5	6	7	8	9	10	11	12	13	14	15	16
25 Row 1	1	1	1	1	1	1	1	1	0	0	0	0	0	0	0	0
Row 2	1	0	1	0	1	0	1	0	0	1	0	1	0	1	0	1
30 Row 3	1	1	0	0	1	1	0	0	0	0	1	1	0	0	1	1
Row 4	1	0	0	1	1	0	0	1	0	1	1	0	0	1	1	0
Row 5	1	1	1	1	0	0	0	0	0	0	0	0	1	1	1	1
35 Row 6	1	0	1	0	0	1	0	1	0	1	0	1	1	0	1	0
Row 7	1	1	0	0	0	0	1	1	0	0	1	1	1	1	0	0
40 Row 8	1	0	0	1	0	1	1	0	0	1	1	0	1	0	0	1

[COMPARATIVE EXAMPLE 1]

45 The liquid crystal display element having the same structure as Example 1 was driven by using the conventional optimized amplitude selective addressing method at 1/480 duty and 1/15 bias wherein the width of selection pulses was changed. As a result, the highest contrast ratios were obtained as shown by circle marks in Figure 14. From Figure 14, it is understood that there is a great difference in contrast ratio at or near a pulse width of 20 μsec (a frame frequency of about 100 Hz), which is generally used in the optimized amplitude selective addressing method at 1/480 duty, between the present invention and the conventional method. Thus, it is understood that the relaxation phenomenon of the liquid crystal is suppressed and the contrast ratio is extremely high in the present invention.

[EXAMPLE 2]

55 A STN liquid crystal display element having an average response speed of 250 msec (25°C) was prepared by using the circuit structure as above-mentioned in which the number of the row electrodes was 490 and a selection of L = 7, J = 70 and K = 8 was made.

The liquid crystal display element was driven in accordance with the driving method of the present invention wherein the width of selection pulses for a selection pattern was changed. As a result, the highest contrast ratios were obtained

at 25°C as shown by triangular marks in Figure 15.

The liquid crystal used does not contain either difluorostilbene type liquid crystal or a tolan type liquid crystal, and as the characteristics of the liquid crystal as a whole, it shows 0.131 of refractive index anisotropy Δn , 18.9 cSt of viscosity η , and 93.9°C of T_c . The thickness d of the liquid crystal was 6.7 μm .

In this case, a selection code used was the same as that used in Example 1. Further, whenever one of the selection patterns was applied to a line electrode, the next line electrode subgroup was applied, and $V_i = -V_0(L - 2i)/L$ and $V_r = V_0 N^{1/2}/L$ were selected, whereby adjustment was made so as to obtain the highest contrast ratio in the absolute value of voltage.

[COMPARATIVE EXAMPLE 2]

The liquid crystal display element having the same structure as Example 2 was driven by using the conventional optimized amplitude selective addressing method at 1/480 duty and 1/15 bias wherein the width of selection pulses was changed. As a result, the highest contrast ratios were obtained as shown by circle marks in Figure 15. From Figure 15, it is found that there is an influence by the relaxation of the liquid crystal at or near a pulse width of 20 μsec (a frame frequency of about 100 Hz), which is generally used in the voltage averaging method (1/480 duty), and the contrast ratio decreases in comparison with the driving method of the present invention. However, the pulse width can be much longer than the conventional method for the same contrast ratio.

[EXAMPLE 3]

A STN liquid crystal display element having an average response speed of 80 msec (25°C) was prepared in which the number of the row electrodes was 240 and a selection of $L = 7$, $J = 34$, $K = 8$ and $L_r = 5$ was made. The liquid crystal display element was driven in accordance with the driving method of the present invention wherein the width of selection pulses for a selection pattern was 20 μsec , and the selection code of Table 13 was used. As a result, a highest contrast ratio was 80:1 at 25°C.

The liquid crystal used did not contain a difluorostilbene type liquid crystal, but contains 61 wt% of a tolan type liquid crystal, and as the characteristics of the liquid crystal as a whole it shows 0.229 of refractive index anisotropy Δn , 17.4 cSt of viscosity η and 89.2°C of T_c . The thickness d of the liquid crystal layer was 3.9 μm .

[EXAMPLE 4]

The same STN liquid crystal display element as in Example 3 was used wherein although $L = 7$, one of the electrodes was a dummy electrode and the number of actually used electrodes was 6 in a line electrode subgroup. The liquid crystal display element had 40 subgroups ($J = 40$). The display element was driven by using the driving method of the present invention under the condition that the width of selection pulses corresponding to a selection pattern was 20 μsec , and the same selection code as in Example 3 was used. As a result, the highest contrast ratio was 75:1 at 25°C. In this case, however, the display cycle was slightly long because the number of the row electrode subgroups was larger than that of Example 3.

[COMPARATIVE EXAMPLE 3]

The liquid crystal display element having the same structure as Example 3 was driven by using the conventional method at 1/240 duty, 1/15 bias and a selection pulse width of 20 μsec . As a result, the highest contrast ratio was 55:1.

[EXAMPLE 5]

A STN liquid crystal display element, which was different from that of Example 3, having an average response speed of 80 msec, (25°C), $N = 240$ and $L = 4$ was prepared. The liquid crystal display element was driven with a selection pulse width of 20 μsec by using a selection code consisting of all possible 16 ($=2^4$) number of selection patterns shown in Table 5. As a result, the highest contrast ratio was 80:1 although a time necessary to complete a display cycle was twice as much as that of Example 3.

The liquid crystal didn't contain a difluorostilbene type liquid crystal, but contains 61 wt% of a tolan type liquid crystal, and as the characteristics of the liquid crystal as a whole, it showed 0.224 of refractive index anisotropy Δn , 22.2 cSt of viscosity η and 89.4°C of T_c . The thickness d of the liquid crystal layer was 3.9 μm .

[EXAMPLE 6]

A STN liquid crystal display element having the same structure as Example 5 except that $N = 240$ and $L = 4$ was prepared. The liquid crystal display element was driven with a pulse width of $12 \mu\text{sec}$ by using a selection code consisting of all possible $16 (=2^4)$ selection patterns (IHAT) shown in Table 5. As a result, the highest contrast ratio was 75:1 at 25°C .

[EXAMPLE 7]

A STN liquid crystal display element having the same structure as Example 5 except that $N = 240$ and $L = 4$ was prepared. The liquid crystal display element was driven at a frame frequency of 90 Hz (i.e. a selection pulse width of about $11.6 \mu\text{sec}$) by using a selection code consisting of all possible $16 (=2^4)$ selection patterns (IHAT) shown in Table 5. As a result, the highest contrast ratio was 80:1 at 25°C .

[COMPARATIVE EXAMPLE 4]

The STN liquid crystal display element having the same structure as Example 5 was driven by using the conventional method at $1/240$ duty, $1/15$ bias and a selection pulse width of $12 \mu\text{sec}$. As a result, the highest contrast ratio was 55:1.

[COMPARATIVE EXAMPLE 5]

The STN liquid crystal display element having the same structure as Example 5 was driven by using the conventional method at $1/240$ duty, $1/15$ bias and a frame frequency of 90 Hz (a selection pulse width of about $46 \mu\text{sec}$). As a result, the highest contrast ratio was 47:1.

[COMPARATIVE EXAMPLE 6]

The STN liquid crystal display element having the same structure as Example 5 was driven by using the IHAT method under the conditions of $N = 240$, $L = 4$ and a frame frequency of 90 Hz (a pulse of about $11.6 \mu\text{sec}$) in such a manner that selection patterns were continuously applied to a line electrode subgroup, and the same selection patterns were applied to the next line electrode so as not to disperse the selection pulses. As a result, the highest contrast ratio was 30:1.

[EXAMPLE 8]

A STN liquid crystal display element having an average response speed of 45 msec (25°C) was prepared wherein the number of line electrodes N was 240 , and a selection of $L = 7$, $J = 34$, $K = 8$ and $L_r = 5$ was made. The liquid crystal display element was driven in accordance with the driving method of the present invention wherein the width of selection pulses corresponding to a selection pattern was $20 \mu\text{sec}$. As a result, the highest contrast ratio was 54:1 at 25°C .

The liquid crystal used contained $44 \text{ wt}\%$ of a difluorostilbene type liquid crystal but didn't contain a tolan type liquid crystal. As the characteristics of the liquid crystal as a whole, it shows 0.185 of refractive index anisotropy Δn , 13.8 cSt of viscosity η and 92.2°C of T_c . The thickness d of the liquid crystal layer was $4.7 \mu\text{m}$.

[EXAMPLE 9]

The liquid crystal display element having the same construction as Example 8 was driven in the same manner as Example 8 except that in the row electrode selection patterns shown in Table 12, two row electrode subgroups were selected to be applied with a selection pattern (Table 12), and thereafter, the selection pattern adjacent to the right side of the applied selection pattern was used.

As a result, the highest contrast ratio was 54:1 which was substantially the same as that of Example 8. However, there was obtained a driving method capable of reducing the brightness nonuniformity of display and providing good look.

[EXAMPLE 10]

In the driving method of Example 9, whenever a display cycle has finished, selection was made by shifting one by one the relation of correspondence between the row electrodes of the row electrode subgroups and the elements of

the selection patterns. The highest contrast ratio was 54:1, which was substantially the same as Example 8. The brightness nonuniformity in the display was further smaller than that of Example 9, and a display having a good look was obtained.

5 [COMPARATIVE EXAMPLE 7]

The STN liquid crystal display element having the same structure as Example 8 was driven by using the conventional method at 1/240 duty, 1/15 bias and with a selection pulse width of 20 μ sec. As a result, the highest contrast ratio was reduced to 11:1.

10 [EXAMPLE 11]

A STN liquid crystal display element, which was separate from that of Example 8, having an average response speed of 45 msec (25°C) was prepared. The liquid crystal display element was driven by using, as line electrode selection code, the inversion code shown in Table 6 and by making a selection of $N = 240$, $L = 3$ and a selection pulse width of 23 μ sec. As a result, the highest contrast ratio was 50:1.

The liquid crystal used contained 44 wt% of a difluorostilbene type liquid crystal and 31 wt% of a tolan type liquid crystal, and as the characteristics of the liquid crystal as a whole, it showed 0.187 of refractive index anisotropy Δn , 15.1 cSt of viscosity η and 84.9°C of T_c . The thickness d of the liquid crystal layer was 4.7 μ m.

20 [EXAMPLE 12]

A STN liquid crystal display element having the same structure as Example 11 except that $N = 240$ and $L = 3$ was prepared. The liquid crystal display element was driven by using the driving method of the present invention by determining a selection pulse width of 23 μ sec and selecting a frequency equalizing code as a line electrode selection code. As a result, the highest contrast ratio was 25:1.

[EXAMPLE 13]

30 The STN liquid crystal display element having the same structure as Example 11 was driven in the same manner as the driving method of Example 11 except that the selection pulse width was 12 μ sec. As a result, the highest contrast ratio was 62:1.

35 [COMPARATIVE EXAMPLE 8]

The STN liquid crystal display element having the same structure as Example 11 was driven by using the conventional method at 1/240 duty, 1/15 bias and a frame frequency of 90 Hz (corresponding to a pulse width of 23 μ sec). As a result, the the highest contrast ratio was 18:1.

40 [EXAMPLE 14]

The STN liquid crystal display element having the same structure as Example 8 was used and a 4 degree gradation display of R, G and B colors was conducted by shifting the selection patterns in the same manner as Example 10. As the selection patterns, [S, S, S, -S, -S, -S] where 1st - 8th selection patterns are expressed by a matrix S, was used. As a result, according to this driving method, a display having a high contrast ratio and capable of reducing unevenness could be obtained.

[EXAMPLE 15]

50 In the same manner as Example 14, selection patterns of [S, -S, S, -S, S, -S] were used. With respect to the contrast ratio and the unevenness, substantially the same degrees as those of Example 14 could be obtained. However, slight flicker was observed.

In accordance with the present invention, selection pulses are dispersed and exist in plural numbers in a single frame, whereby it is possible to reduce a change of optical state in comparison with the conventional method for a simple matrix system wherein there is only one selection pulse in a single frame. Accordingly, the driving method of the present invention is effective when a liquid crystal display element having an average response time of 200 msec or lower at a dynamic driving time, preferably 100 msec or lower, most preferably 50 msec or lower, is driven.

Further, since the driving method of the present invention can basically utilize the features of the IHAT method, a

voltage to be supplied can be reduced in comparison with the conventional method when $L \geq 4$. In this case, if the value L is increased, the voltage to be supplied is further reduced. However, when the value L is large, the number of voltage level ($L + 1$) of a waveform to be applied to column electrodes is also increased to thereby make hardware complicated. Accordingly, at present, it is possible to determine the value L to be 3 - 32, more preferably 7 - 15.

Since driver ICs for driving a liquid crystal display element can produce a 2^n (n is an integer) number of voltage levels, a generally used driver IC can be used for driving the liquid crystal display element if the number of line electrodes for a batch selection is $(2^n - 1)$, and therefore, it is practically useful.

Further, in accordance with the present invention, since the number of selection pulses necessary to display a display information is substantially increased in comparison with the conventional method, the present invention is effective in a case of driving fast response display. Further, the present invention permits a gradation display or a colored display which have a high contrast ratio.

Similarly, the driving method of the present invention can provide uniformity in a display in comparison with the conventional method.

In the conventional method, there was a large variation in the frequency components of a voltage waveform for driving depending on a display pattern, which caused brightness nonuniformity display. However, in accordance with the present invention, since there is a little fluctuation in the frequency components in a display pattern, it can suppress an uneven display.

Claims

1. A method of driving a matrix type liquid crystal display element comprising at least $J \times L$ row electrodes, where J and L are respectively integers of 2 or more and a plural number of column electrodes wherein,

said $J \times L$ row electrodes are divided into J row electrode subgroups each comprising L row electrodes so that said subgroups are selected as each batch to be driven;

when voltages are applied to the row electrodes, either a voltage level of $+V_r$ or $-V_r$, where $V_r > 0$, is applied at a selection time, when a voltage at a non-selection time is 0 (zero);

voltages applied to the column electrodes are selected from $(L + 1)$ voltage levels of V_0, V_1, \dots, V_L where $V_0 < V_1 < \dots < V_L$; and

when a two-valued information of the j -th row electrode subgroup, where j is an integer of any of 1 through J , in a specified column in the plural column electrodes is expressed by a column vector D_j having L elements, where the elements of the vector D_j comprise 1 indicating ON and 0 indicating OFF, the following conditions are satisfied:

(1) said j -th row electrode subgroup is selected by applying sequentially voltages so that the elements of a selection voltage vector which constitute a selection voltage matrix, as defined in the following items (a) and (b), correspond to voltages applied to the row electrodes constituting the j -th row electrode subgroups:

(a) a matrix $A = [\alpha_1, \alpha_2, \dots, \alpha_q, \dots, \alpha_k]$, where α_q is a column vector having L elements, comprising L rows and K columns, which has an element of $+V_r$ or $-V_r$ and in which the product of a matrix and a transposed matrix of the same assumes a scalar multiple of the unit matrix is selected, where K is an integer having a relation of $L \leq 2^p = K$ and p is a natural number, and

(b) as said selection voltage, matrix comprising selection voltage vectors which include at least each one of $\alpha_1, \alpha_2, \dots, \alpha_k$ and are arranged in a matrix are selected, and,

(c) for each of the row electrode subgroups, a scanning is divided into a plurality of stages to dispersively apply selection pulses during a display cycle, whereby the length of a non-selection time to each of the row electrodes is determined so as to suppress the relaxation of liquid crystal in the liquid crystal display element,

(2) when said j -th row electrode subgroup is selected under the above-condition (1), the voltages applied to the column electrodes to indicate a display information by means of the vector D_j are determined as in the following items (a) and (b):

(a) a vector β is formed by the selection voltages applied to the j -th row electrode subgroup where $+V_r$ represents 1 and $-V_r$ represents 0, and

(b) a voltage V_i , where i is an integer of any of 0 through L , given by the sum of exclusive OR of the elements corresponding to the vectors β and D_j is applied to the column electrodes.

2. The driving method according to Claim 1, wherein the selection vectors which constitute a selection voltage matrix comprise substantially each one of $\alpha_1, \alpha_2, \dots, \alpha_k, -\alpha_1, -\alpha_2, \dots, -\alpha_k$.

3. The driving method according to Claim 1, wherein the selection vectors which constitute a selection voltage matrix are so selected as to include all possible selection vectors.

4. The driving method according to Claim 1, wherein a display information of the j-th row electrode subgroup in a specified column of the plural column electrodes has a gradation of (U + 1) stages, where U is a natural number of 2 or more, in place of the two-valued information;

the selection voltage vectors which constitute a selection voltage matrix comprise substantially each KU number of $\alpha_1, \alpha_2, \dots, \alpha_k$ in which the selection voltage vectors are arranged in a matrix, are selected, and the selected vectors having the each KU number are used to display a gradation display of (U + 1) stages by giving a specified ratio to the total U number of ON and OFF signs.

5. The driving method according to Claim 4, wherein when a vector matrix $[\alpha_1, \alpha_2, \dots, \alpha_k]$ is represented as S, as a unit, a selection voltage matrix having an arrangement [S, S ..., S, -S, -S, ..., -S] is used.

6. The driving method according to Claim 1, wherein each time the voltages corresponding to selection voltage vectors as elements of the selection voltage matrix are applied to a row electrode subgroup, the voltages are applied to the next row electrode subgroups.

7. The driving method according to Claim 1, wherein a selection voltage matrix which selects a row electrode subgroup has selection vectors the order of arrangement of which is shifted with respect to another selection voltage matrix which selects another row electrode subgroups.

8. The driving method according to Claim 1, wherein a matrix in which a row of the matrix A which is used for forming a selection voltage matrix to display a former display information is replaced, is again used as the matrix A for forming selection voltage matrix.

9. The driving method according to Claim 1, wherein an (L - L_r) number of dummy row electrodes are added to a row electrode subgroup comprising an L_r number of row electrodes where L_r < L.

10. The driving method according to Claim 1, wherein a part of an L number of row electrodes which constitutes a row electrode subgroup is an imaginary electrode or electrodes.

11. The driving method according to Claim 1, wherein 3 through 32 row electrodes are driven as a batch.

12. The driving method according to Claim 1, wherein a (2ⁿ - 1) number of row electrodes are driven as a batch.

13. the driving method according to Claim 1, wherein said liquid crystal display element comprises a liquid crystal layer of a nematic liquid crystal in which a chiral material is contained, the dielectric anisotropy is positive and the twist angle is 160° - 300°, a pair of substrates with transparent electrodes and orientation controlling films, which are disposed substantially in parallel and hold the liquid crystal layer therebetween, and a driving means to apply a voltage across the transparent electrodes of the pair of substrates which hold the liquid crystal layer.

14. The driving method according to Claim 1, wherein said liquid crystal display element comprises a difluorostilbene type or a tolan type liquid crystal material.

Patentansprüche

1. Verfahren zum Ansteuern eines Flüssigkristall-Anzeigeelements vom Matrix-Typ, das mindestens J x L Zeilenelektroden und eine Mehrzahl von Spaltenelektroden aufweist, wobei J und L jeweils ganze Zahlen gleich oder größer 2 sind, bei dem

die J x L Zeilenelektroden so in jeweils L Zeilenelektroden aufweisende J Zeilenelektroden-Untergruppen aufgeteilt sind, daß die Untergruppen als jeweils anzusteuender Satz gewählt werden;

wenn Spannungen an die Zeilenelektroden angelegt werden, zu einer Auswahlzeit ein Spannungspegel von entweder $+V_r$ oder $-V_r$ angelegt wird, wobei $V_r > 0$, wenn eine Spannung zu einer Nicht-Auswahlzeit 0 (null) beträgt;

Spannungen, die an die Spaltenelektroden angelegt werden, aus $(L + 1)$ Spannungspegeln V_0, V_1, \dots, V_L ausgewählt werden, wobei $V_0 < V_1 < \dots < V_L$; und

wenn eine zweiwertige Information der j -ten Zeilenelektroden-Untergruppe, wobei j irgendeine ganze Zahl von 1 bis J ist, in einer bestimmten Spalte in der Mehrzahl der Spaltenelektroden durch einen Spaltenvektor D_j mit L Elementen ausgedrückt wird, wobei die Elemente des Vektors D_j 1 zum Anzeigen von EIN und 0 zum Anzeigen von AUS umfassen, die folgenden Bedingungen erfüllt werden:

(1) die j -te Zeilenelektroden-Untergruppe wird durch Anlegen von aufeinanderfolgenden Spannungen so ausgewählt, daß die Elemente eines Auswahl-Spannungsvektors, die eine Auswahl-Spannungsmatrix bilden, wie es in den folgenden Punkten (a) und (b) definiert ist, Spannungen entsprechen, die an die Zeilenelektroden angelegt werden, welche die j -te Zeilenelektroden-Untergruppe bilden:

(a) eine Matrix $A = [\alpha_1, \alpha_2, \dots, \alpha_q, \dots, \alpha_k]$, wobei α_q ein Spaltenvektor mit L Elementen ist, mit L Zeilen und K Spalten, welche ein Element $+V_r$ oder $-V_r$ aufweist und in welcher das Produkt einer Matrix und einer transponierten Matrix derselben ein skalares Vielfaches der Einheitsmatrix annimmt, wird ausgewählt, wobei K eine ganze Zahl ist, die der Beziehung $L \leq 2^p = K$ genügt, und p eine natürliche Zahl ist, und

(b) als die Auswahlspannung wird eine Matrix mit Auswahl-Spannungsvektoren ausgewählt, welche mindestens jeden von $\alpha_1, \alpha_2, \dots, \alpha_k$ einschließen und in einer Matrix angeordnet sind, und

(c) bei jeder der Zeilenelektroden-Untergruppen wird ein Abtasten in eine Mehrzahl von Schritten aufgeteilt, um während eines Anzeigezyklus alternativ verneinend Auswahlimpulse anzulegen, wodurch die Länge einer Nicht-Auswahlzeit für jede der Zeilenelektroden festgelegt wird, um die Relaxation von Flüssigkristall im Flüssigkristall-Anzeigeelement zu unterdrücken,

(2) wenn die j -te Zeilenelektroden-Untergruppe unter der obigen Bedingung (1) ausgewählt wird, werden die Spannungen, die an die Spaltenelektroden angelegt werden, um mittels des Vektors D_j eine Anzeigeeinformation anzuzeigen, wie in den folgenden Punkten (a) und (b) festgelegt:

(a) ein Vektor β wird durch Auswahlspannungen gebildet, die an die j -te Zeilenelektroden-Untergruppe angelegt werden, wobei $+V_r$ 1 darstellt und $-V_r$ 0 darstellt, und

(b) eine Spannung V_i , wobei i irgendeine ganze Zahl von 0 bis L ist, wird an die Zeilenelektroden angelegt, welche durch die Summe der Exklusiv-OR-Verknüpfung der Elemente gegeben ist, die den Vektoren β und D_j entsprechen.

2. Ansteuerverfahren nach Anspruch 1, bei dem die Auswahlvektoren, die eine Auswahl-Spannungsmatrix bilden, im wesentlichen jeden einzelnen $\alpha_1, \alpha_2, \dots, \alpha_k, -\alpha_1, -\alpha_2, \dots, -\alpha_k$ umfassen.

3. Ansteuerverfahren nach Anspruch 1, bei dem die Auswahlvektoren, die eine Auswahl-Spannungsmatrix bilden, so ausgewählt werden, daß sie alle möglichen Auswahlvektoren einschließen.

4. Ansteuerverfahren nach Anspruch 1, bei dem eine Anzeigeeinformation der j -ten Zeilenelektroden-Untergruppe in einer bestimmten Spalte der Mehrzahl der Spaltenelektroden anstelle der zweiwertigen Information eine Abstufung von $(U + 1)$ Stufen aufweist, wobei U eine natürliche Zahl gleich oder größer 2 ist;

die Auswahl-Spannungsvektoren ausgewählt werden, die eine Auswahl-Spannungsmatrix bilden und im wesentlichen jede Anzahl KU der $\alpha_1, \alpha_2, \dots, \alpha_k$ umfassen, wobei die Auswahl-Spannungsvektoren in einer Matrix angeordnet sind, und

die ausgewählten Vektoren mit jeder Anzahl KU verwendet werden, um eine Abstufungs-Anzeige mit $(U + 1)$ Stufen anzuzeigen, indem der gesamten Anzahl U von EIN- und AUS-Zeichen ein bestimmtes Verhältnis zugeteilt wird.

5. Ansteuerverfahren nach Anspruch 4, bei dem, wenn eine Vektormatrix $[\alpha_1, \alpha_2, \dots, \alpha_k]$ als S dargestellt wird, nämlich als Einheitsmatrix, eine Auswahl-Spannungsmatrix mit einer Anordnung von $[S, S, \dots, S, -S, -S, \dots, -S]$ verwendet wird.

EP 0 522 510 B1

6. Ansteuerverfahren nach Anspruch 1, bei dem jedes Mal, wenn die Spannungen, welche Auswahl-Spannungsvektoren als Elementen der Auswahl-Spannungsmatrix entsprechen, an eine Zeilenelektroden-Untergruppe angelegt werden, die Spannungen an die nächsten Zeilenelektroden-Untergruppen angelegt werden.
- 5 7. Ansteuerverfahren nach Anspruch 1, bei dem eine Auswahl-Spannungsmatrix, die eine Zeilenelektroden-Untergruppe auswählt, Auswahl-Vektoren aufweist, deren Anordnungsreihenfolge bezüglich einer anderen Auswahl-Spannungsmatrix, die eine andere Zeilenelektroden-Untergruppe auswählt, umgestellt ist.
- 10 8. Ansteuerverfahren nach Anspruch 1, bei dem eine Matrix, bei der eine Zeile der Matrix A ersetzt wird, welche zur Bildung einer Auswahl-Spannungsmatrix verwendet wird, um eine frühere Anzeigeinformation anzuzeigen, wieder als Matrix A zur Bildung einer Auswahl-Spannungsmatrix verwendet wird.
- 15 9. Ansteuerverfahren nach Anspruch 1, bei dem eine Zahl $(L - L_r)$ von Dummy-Zeilenelektroden zu einer Zeilenelektroden-Untergruppe hinzugefügt wird, welche eine Zahl L_r von Zeilenelektroden aufweist, wobei $L_r < L$.
- 20 10. Ansteuerverfahren nach Anspruch 1, bei dem es sich bei einem Teil einer Zahl L von Zeilenelektroden, welche eine Zeilenelektroden-Untergruppe bildet, um eine imaginäre Elektrode oder imaginäre Elektroden handelt.
- 25 11. Ansteuerverfahren nach Anspruch 1, bei dem 3 bis 32 Zeilenelektroden als Satz angesteuert werden.
- 30 12. Ansteuerverfahren nach Anspruch 1, bei dem eine Anzahl von $(2^n - 1)$ Zeilenelektroden als Satz angesteuert werden.
- 35 13. Ansteuerverfahren nach Anspruch 1, bei dem das Flüssigkristall-Anzeigeelement eine Flüssigkristall-Schicht aus einem nematischen Flüssigkristall, worin ein chirales Material enthalten ist, die dielektrische Anisotropie positiv ist und der Verdrillungswinkel $160^\circ - 300^\circ$ beträgt, ein Substrate-Paar mit transparenten Elektroden und orientierungssteuernden Filmen, die im wesentlichen parallel angeordnet sind und die Flüssigkristall-Schicht dazwischen halten, und eine Ansteuervorrichtung umfaßt, um eine Spannung zwischen den transparenten Elektroden des Substrate-Paares anzulegen, das die Flüssigkristall-Schicht hält.
- 40 14. Ansteuerverfahren nach Anspruch 1, bei dem das Flüssigkristall-Anzeigeelement ein Flüssigkristall-Material vom Difluorstilben-Typ oder Tolan-Typ umfaßt.

35 Revendications

1. Procédé de commande d'un élément d'affichage à cristaux liquides du type à matrice, comprenant au moins J x L électrodes de rangée, où J et L sont respectivement des entiers de 2 ou davantage, et une pluralité d'électrodes de colonne, dans lequel,
- 40 - lesdites J x L électrodes de rangée sont divisées en J sous-groupes d'électrodes de rangée, comprenant chacun L électrodes de rangée, de telle sorte que lesdits sous-groupes sont sélectionnés en tant que chaque lot à commander ;
- 45 - lorsque des tensions sont appliquées aux électrodes de rangée, un niveau de tension soit de $+V_r$ soit de $-V_r$, où $V_r > 0$, est appliqué à un temps de sélection, lorsqu'une tension à un temps de non-sélection vaut 0 (zéro) ;
- les tensions appliquées aux électrodes de colonne sont choisies parmi $(L + 1)$ niveaux de tension V_0, V_1, \dots, V_L où $V_0 < V_1 < \dots < V_L$; et
- 50 - lorsqu'une information à deux valeurs du $j^{\text{ème}}$ sous-groupe d'électrodes de rangée, où j est un entier prenant l'une quelconque des valeurs 1 à J, dans une colonne spécifiée de la pluralité d'électrodes de colonne, est exprimée par un vecteur de colonne D_j ayant L éléments, où les éléments du vecteur D_j comprennent 1 indiquant MARCHE et 0 indiquant ARRÊT, les conditions suivantes sont satisfaites :
- 55 (1) ledit $j^{\text{ème}}$ sous-groupe d'électrodes de rangée est sélectionné par application séquentielle de tensions, de telle sorte que les éléments d'un vecteur de tension de sélection qui constituent une matrice de tension de sélection, telle que définie dans les points (a) et (b) suivants, correspondent aux tensions appliquées aux électrodes de rangée constituant le $j^{\text{ème}}$ sous-groupe d'électrodes de rangée :

EP 0 522 510 B1

(a) une matrice $A = [\alpha_1, \alpha_2, \dots, \alpha_q, \dots, \alpha_k]$, où α_q est un vecteur de colonne ayant L éléments, comprenant L rangées et K colonnes, qui a un élément $+V_r$ ou $-V_r$ et dans lequel le produit d'une matrice et d'une matrice transposée de celle-ci donne un multiple scalaire de la matrice unité, est sélectionnée, où K est un entier vérifiant la relation $L \leq 2^p = K$ et où p est un nombre naturel, et

5

(b) en tant que ladite tension de sélection, des matrices comprenant des vecteurs de tension de sélection qui comprennent au moins chacun parmi $\alpha_1, \alpha_2, \dots, \alpha_k$ et sont arrangés en une matrice, sont sélectionnées, et,

10

(c) pour chacun des sous-groupes d'électrodes de rangée, un balayage est divisé en une pluralité d'étages pour appliquer de façon dispersive des impulsions de sélection pendant un cycle d'affichage, la longueur d'un temps de non-sélection pour chacune des électrodes de rangée étant déterminée de façon à supprimer la relaxation des cristaux liquides dans l'élément d'affichage à cristaux liquides,

15

(2) lorsque ledit $j^{\text{ème}}$ sous-groupe d'électrodes de rangée est sélectionné sous la condition (1) ci-dessus, les tensions appliquées aux électrodes de colonne pour indiquer une information d'affichage au moyen du vecteur D_j , sont déterminées comme dans les points (a) et (b) suivants :

20

(a) un vecteur β est formé par les tensions de sélection appliquées au $j^{\text{ème}}$ sous-groupe d'électrodes de rangée, où $+V_r$ représente 1 et $-V_r$ représente 0, et

25

(b) une tension V_i , où i est un entier prenant l'une quelconque des valeurs 0 à L, donné par la somme des OU exclusifs des éléments correspondant aux vecteurs β et D_j , est appliquée aux électrodes de colonne.

2. Procédé de commande selon la revendication 1, dans lequel les vecteurs de sélection qui constituent une matrice de tension de sélection comprennent sensiblement chacun parmi $\alpha_1, \alpha_2, \dots, \alpha_k, -\alpha_1, -\alpha_2, \dots, -\alpha_k$.

30

3. Procédé de commande selon la revendication 1, dans lequel les vecteurs de sélection qui constituent une matrice de tension de sélection sont choisis de façon à comprendre tous les vecteurs de sélection possibles.

4. Procédé de commande selon la revendication 1, dans lequel

35

- une information d'affichage du $j^{\text{ème}}$ sous-groupe d'électrodes de rangée dans une colonne spécifiée de la pluralité des électrodes de colonne a une gradation de (U + 1) étages, où U est un nombre naturel égal à 2 ou plus, à la place de l'information à deux valeurs ;
- les vecteurs de tension de sélection qui constituent une matrice de tension de sélection comprennent sensiblement chaque nombre KU de $\alpha_1, \alpha_2, \dots, \alpha_k$ dans lequel les vecteurs de tension de sélection sont arrangés en une matrice, sont sélectionnés, et
- les vecteurs sélectionnés ayant chaque nombre KU sont utilisés pour afficher un affichage de gradation de (U + 1) étages en donnant un rapport spécifié du nombre U total de signes MARCHE et ARRÊT.

40

5. Procédé de commande selon la revendication 4, dans lequel, lorsqu'une matrice de vecteurs $[\alpha_1, \alpha_2, \dots, \alpha_k]$ est représentée en tant que S, en tant qu'unité, une matrice de tension de sélection ayant un arrangement [S, S, ..., S, -S, -S ..., -S] est utilisée.

45

6. Procédé de commande selon la revendication 1, dans lequel chaque fois que les tensions correspondant aux vecteurs de tension de sélection, en tant qu'éléments de la matrice de tension de sélection, sont appliquées à un sous-groupe d'électrodes de rangée, les tensions sont appliquées aux sous-groupes suivants d'électrodes de rangée.

50

7. Procédé de commande selon la revendication 1, dans lequel une matrice de tension de sélection qui sélectionne un sous-groupe d'électrodes de rangée a des vecteurs de sélection dont l'ordre d'arrangement est décalé par rapport à une autre matrice de tension de sélection qui sélectionne d'autres sous-groupes d'électrodes de rangée.

55

8. Procédé de commande selon la revendication 1, dans lequel une matrice dans laquelle une rangée de la matrice A qui est utilisée pour former une matrice de tension de sélection pour afficher une information d'affichage antérieure est remplacée, est à nouveau utilisée en tant que la matrice A pour former une matrice de tension de

sélection.

- 5
9. Procédé de commande selon la revendication 1, dans lequel un nombre $(L - L_r)$ d'électrodes de rangée fictives sont ajoutées à un sous-groupe d'électrodes de rangée comprenant un nombre L_r d'électrodes de rangée où $L_r < L$.
10. Procédé de commande selon la revendication 1, dans lequel une partie d'un nombre L d'électrodes de rangée qui constituent un sous-groupe d'électrodes de rangée est une ou des électrodes imaginaires.
- 10 11. Procédé de commande selon la revendication 1, dans lequel 3 à 32 électrodes de rangée sont commandées en tant que lot.
12. Procédé de commande selon la revendication 1, dans lequel un nombre $(2^n - 1)$ d'électrodes de rangée sont commandées en tant que lot.
- 15 13. Procédé de commande selon la revendication 1, dans lequel ledit élément d'affichage à cristaux liquides comprend une couche de cristaux liquides de cristaux liquides nématiques dans lesquels une matière chirale est contenue, l'anisotropie diélectrique est positive et l'angle de torsion est de $160^\circ - 300^\circ$, une paire de substrats avec des électrodes transparentes et des films contrôlant l'orientation, qui sont disposés sensiblement en parallèle et maintiennent la couche de cristaux liquides entre eux, et un moyen de commande pour appliquer une tension entre les
- 20 électrodes transparentes de la paire de substrats qui maintiennent la couche de cristaux liquides.
14. Procédé de commande selon la revendication 1, dans lequel ledit élément d'affichage à cristaux liquides comprend une matière à cristaux liquides de type difluorostilbène ou de type tolane.

25

30

35

40

45

50

55

FIGURE 1

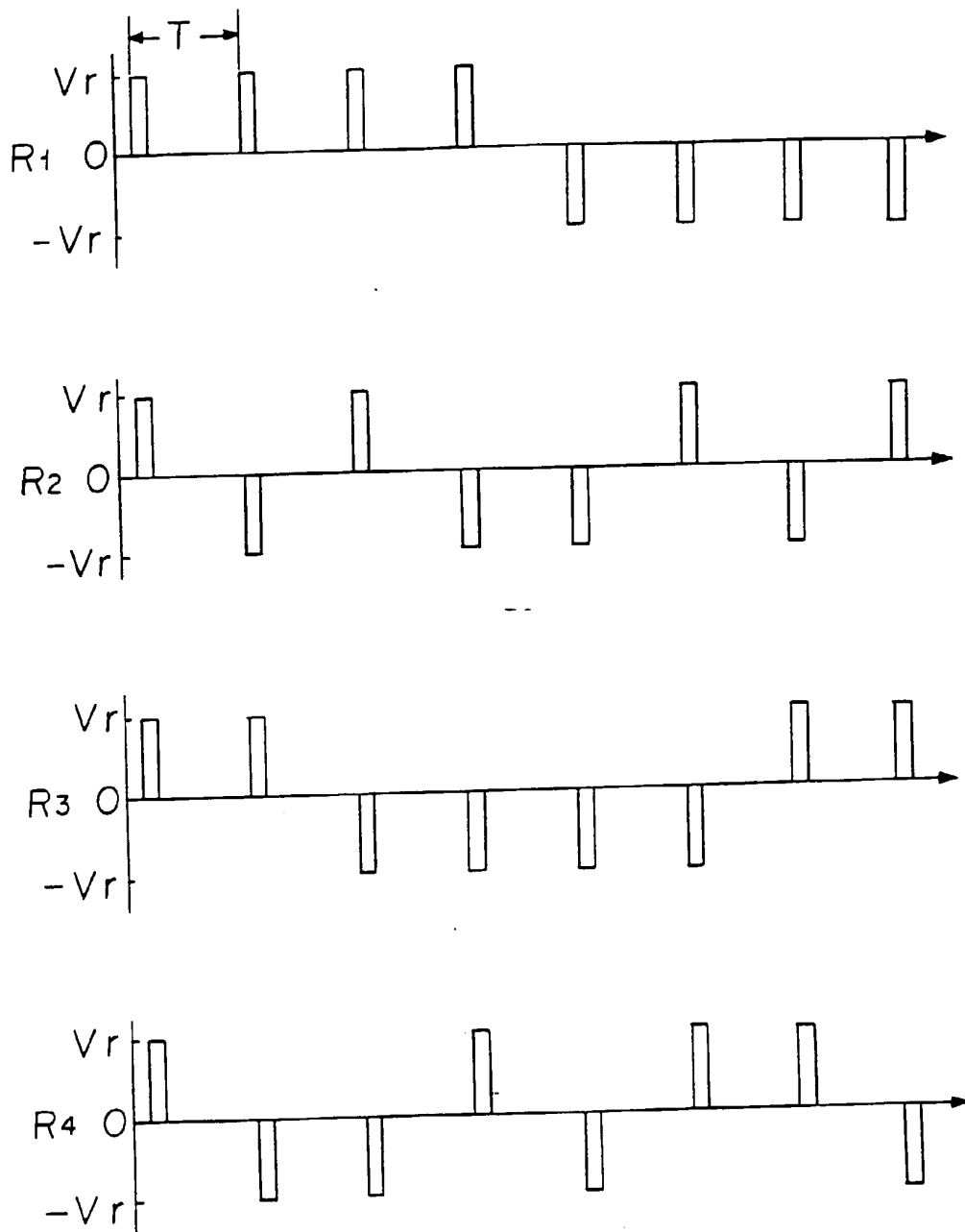
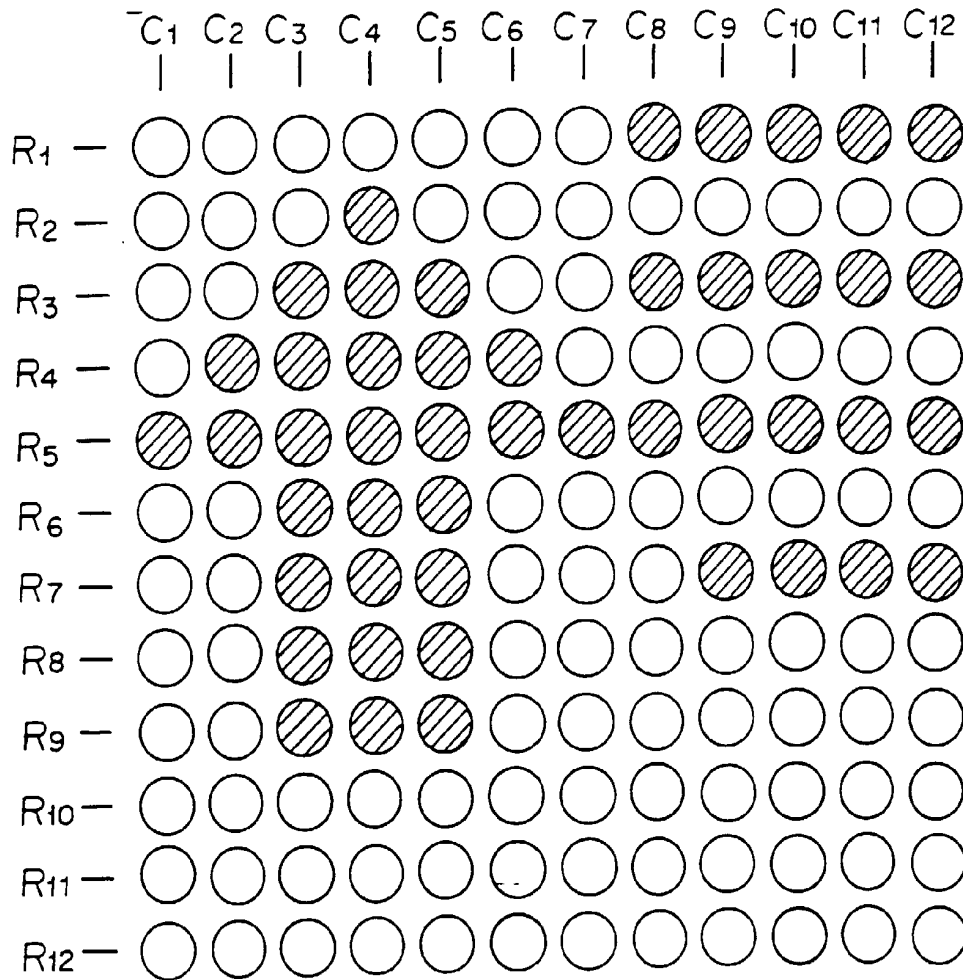


FIGURE 2



d ₁	0	0	0	0	0	0	0	1	1	1	1	1
d ₂	0	0	0	1	0	0	0	0	0	0	0	0
d ₃	0	0	1	1	1	0	0	1	1	1	1	1
d ₄	0	1	1	1	1	1	0	0	0	0	0	0
d ₅	1	1	1	1	1	1	1	1	1	1	1	1
d ₆	0	0	1	1	1	0	0	0	0	0	0	0
d ₇	0	0	1	1	1	0	0	0	1	1	1	1
d ₈	0	0	1	1	1	0	0	0	0	0	0	0
d ₉	0	0	1	1	1	0	0	0	0	0	0	0
d ₁₀	0	0	0	0	0	0	0	0	0	0	0	0
d ₁₁	0	0	0	0	0	0	0	0	0	0	0	0
⋮	⋮	⋮	⋮	⋮	⋮	⋮	⋮	⋮	⋮	⋮	⋮	⋮
⋮	⋮	⋮	⋮	⋮	⋮	⋮	⋮	⋮	⋮	⋮	⋮	⋮

FIGURE 3

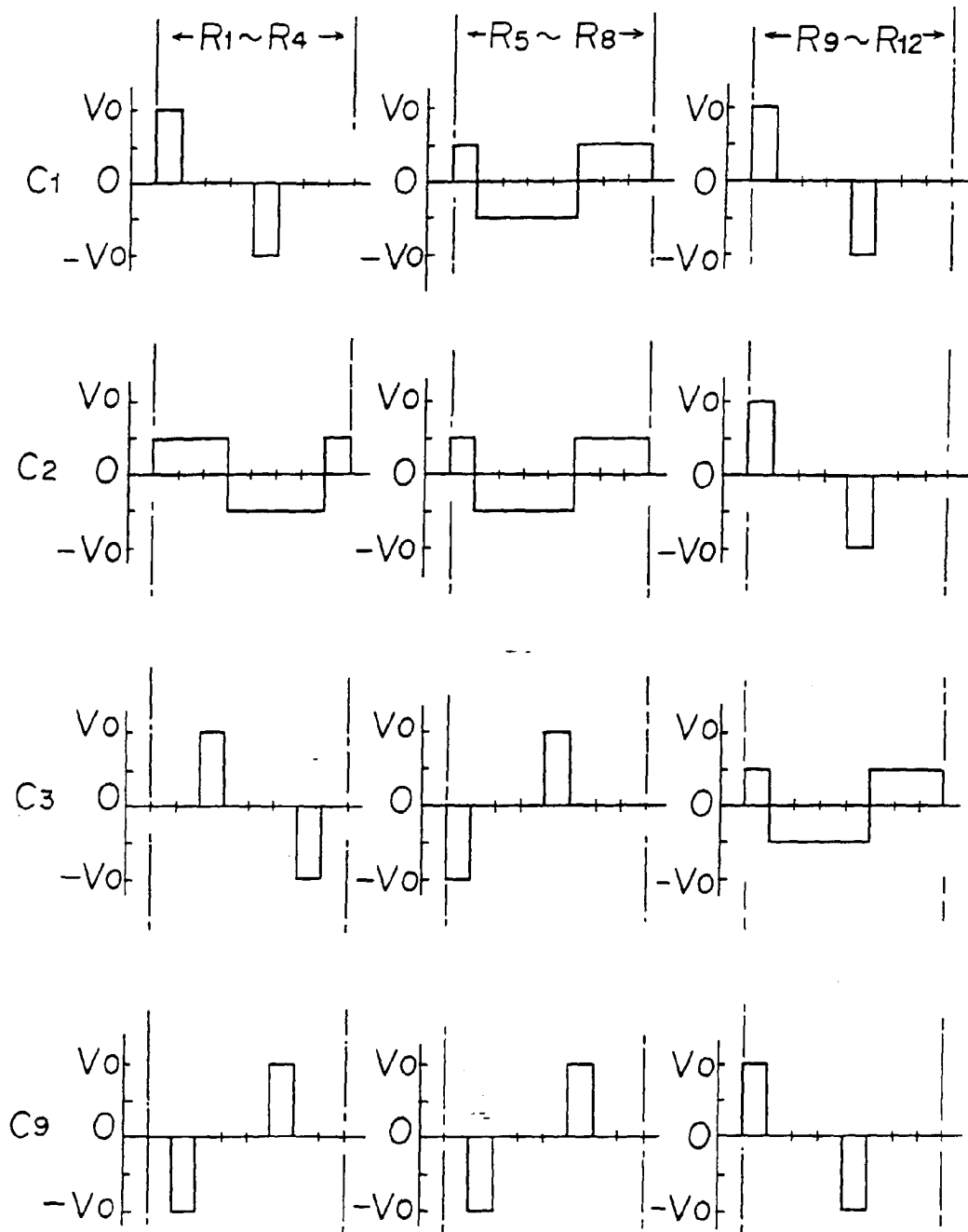


FIGURE 4

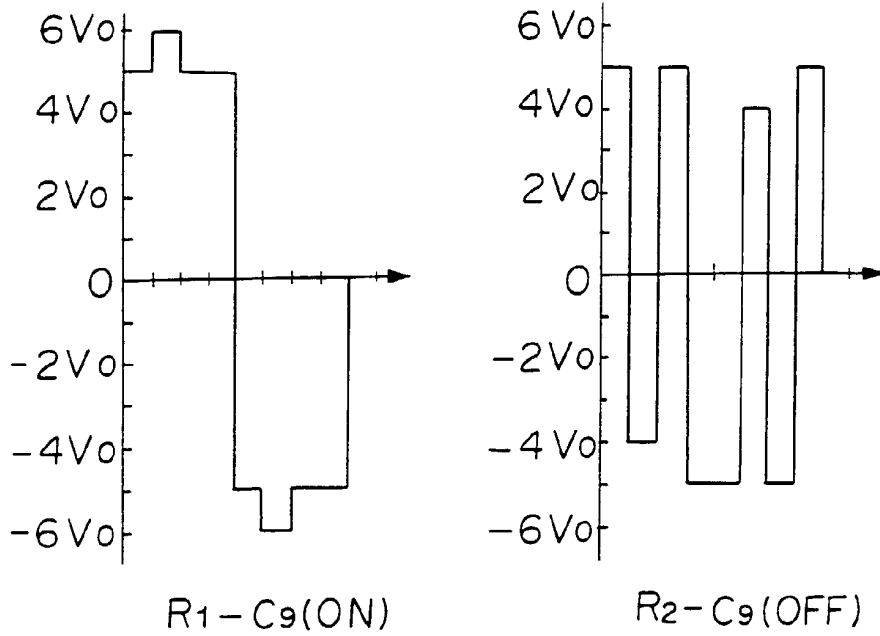


FIGURE 5

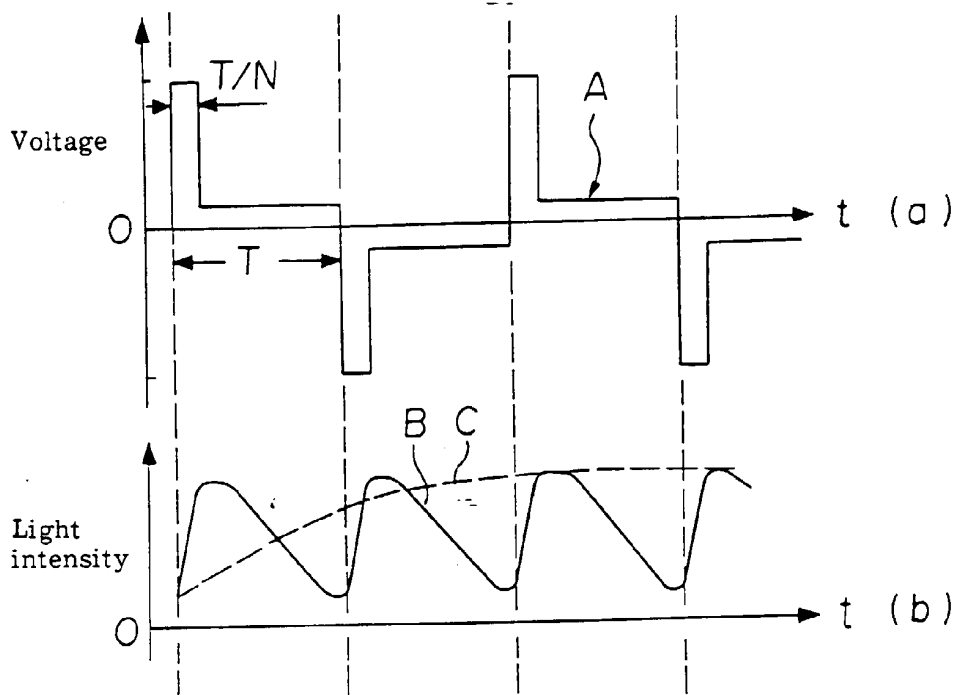


FIGURE 6

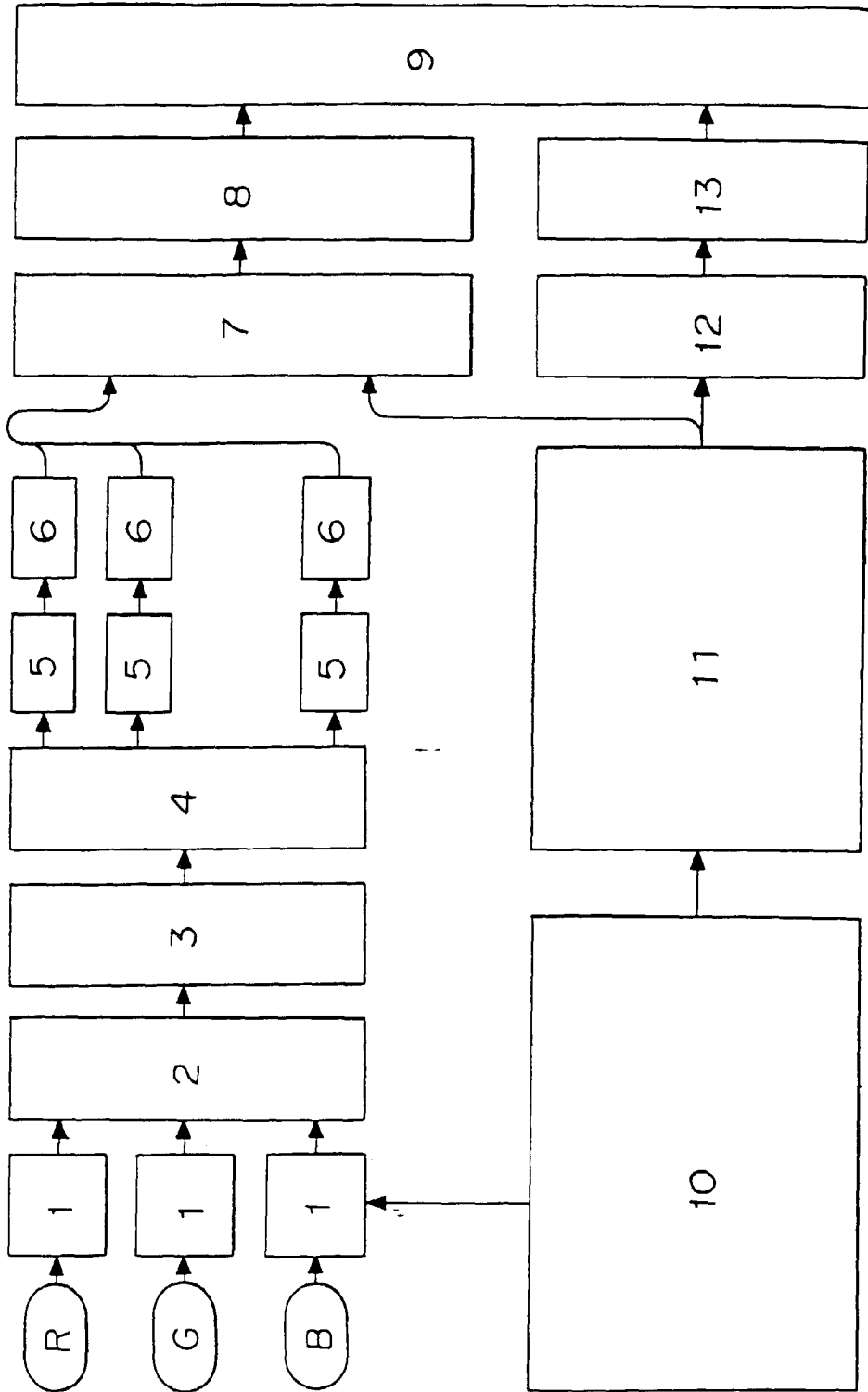


FIGURE 7

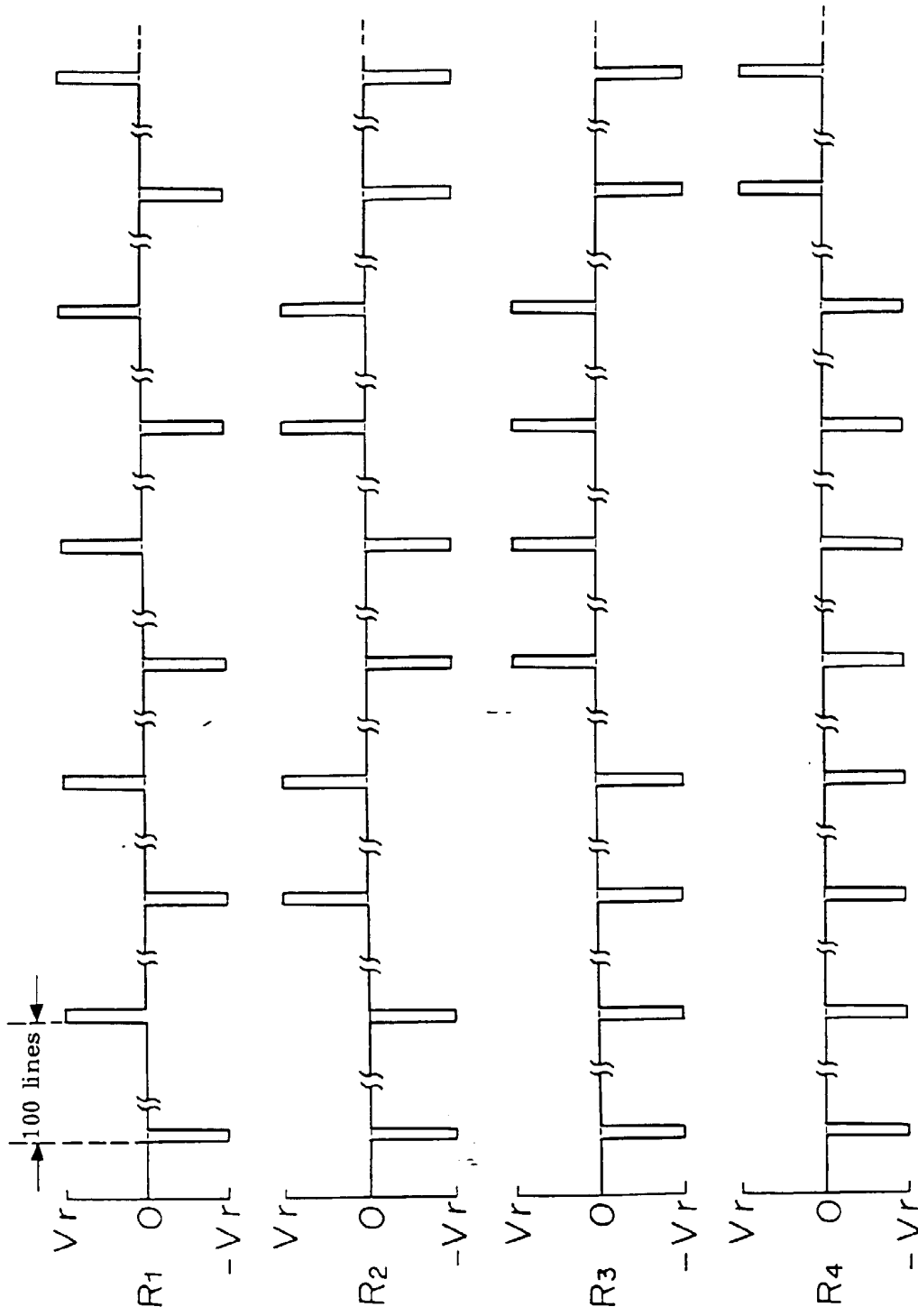


FIGURE 8

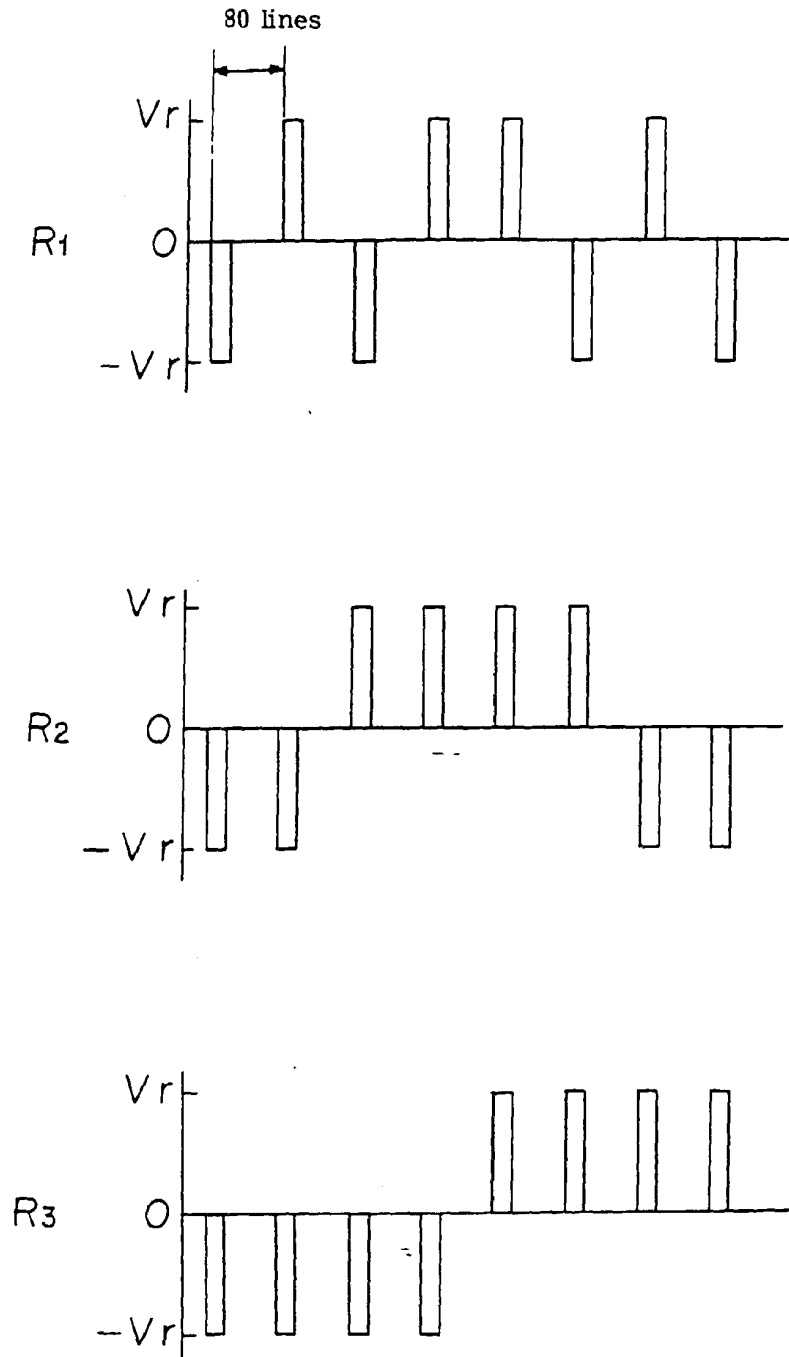


FIGURE 9

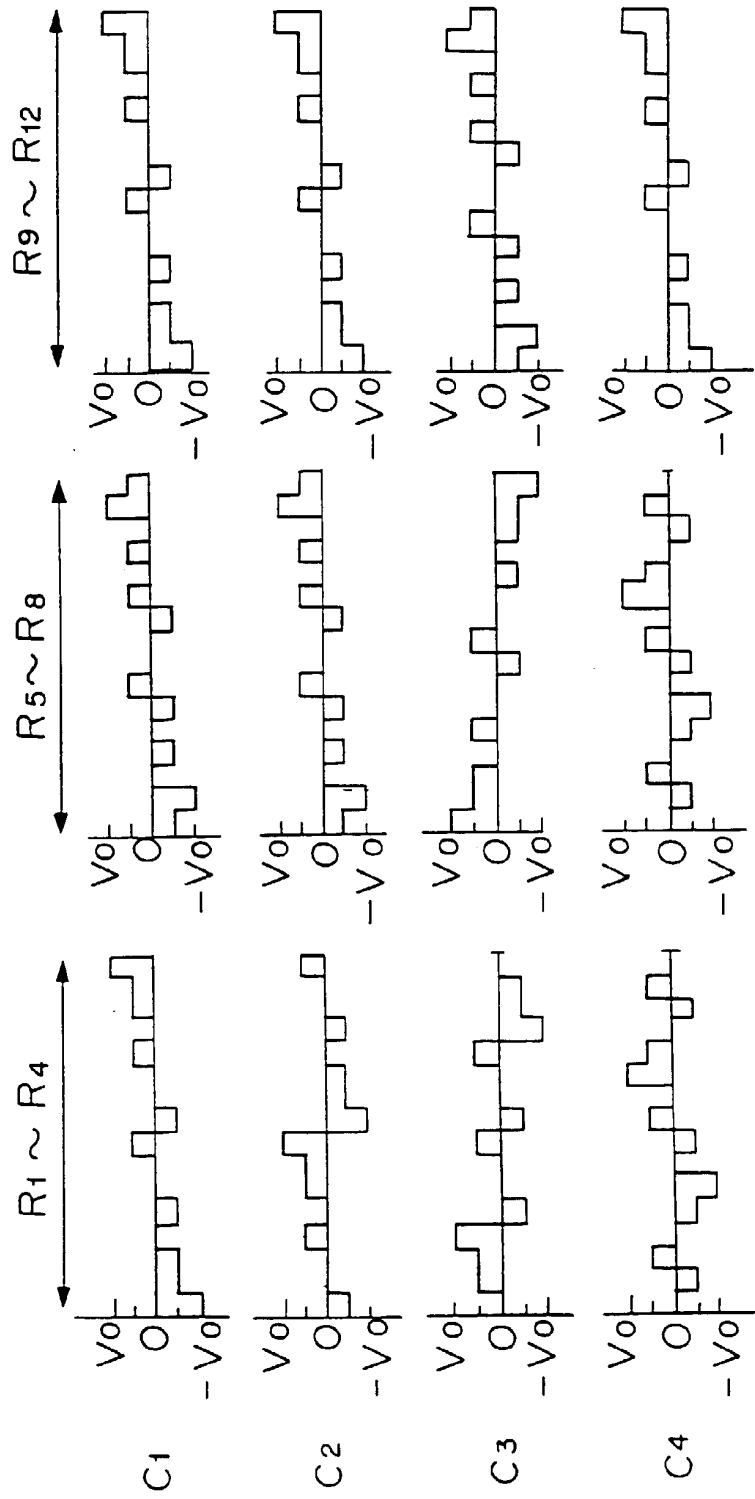


FIGURE 10

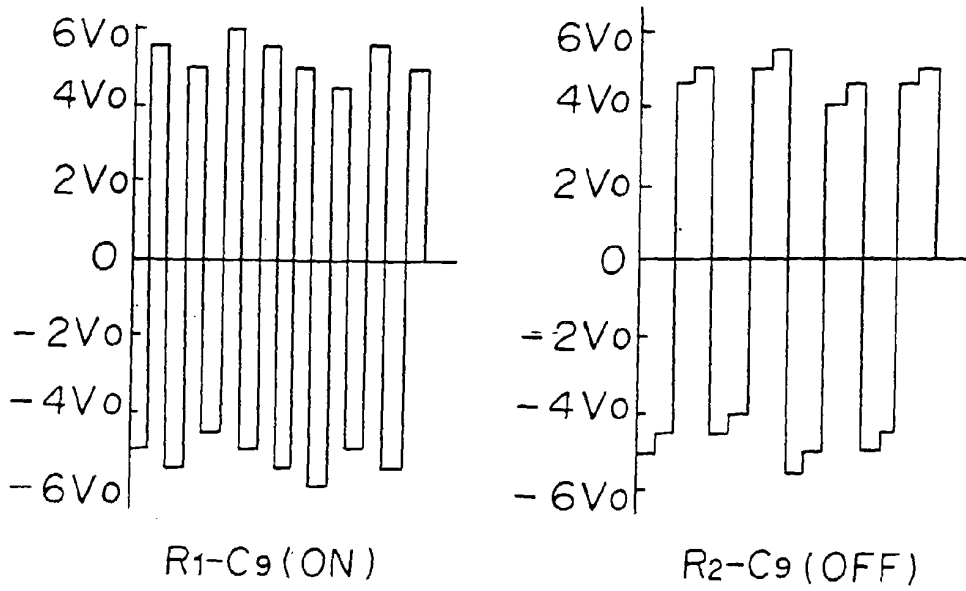


FIGURE 11

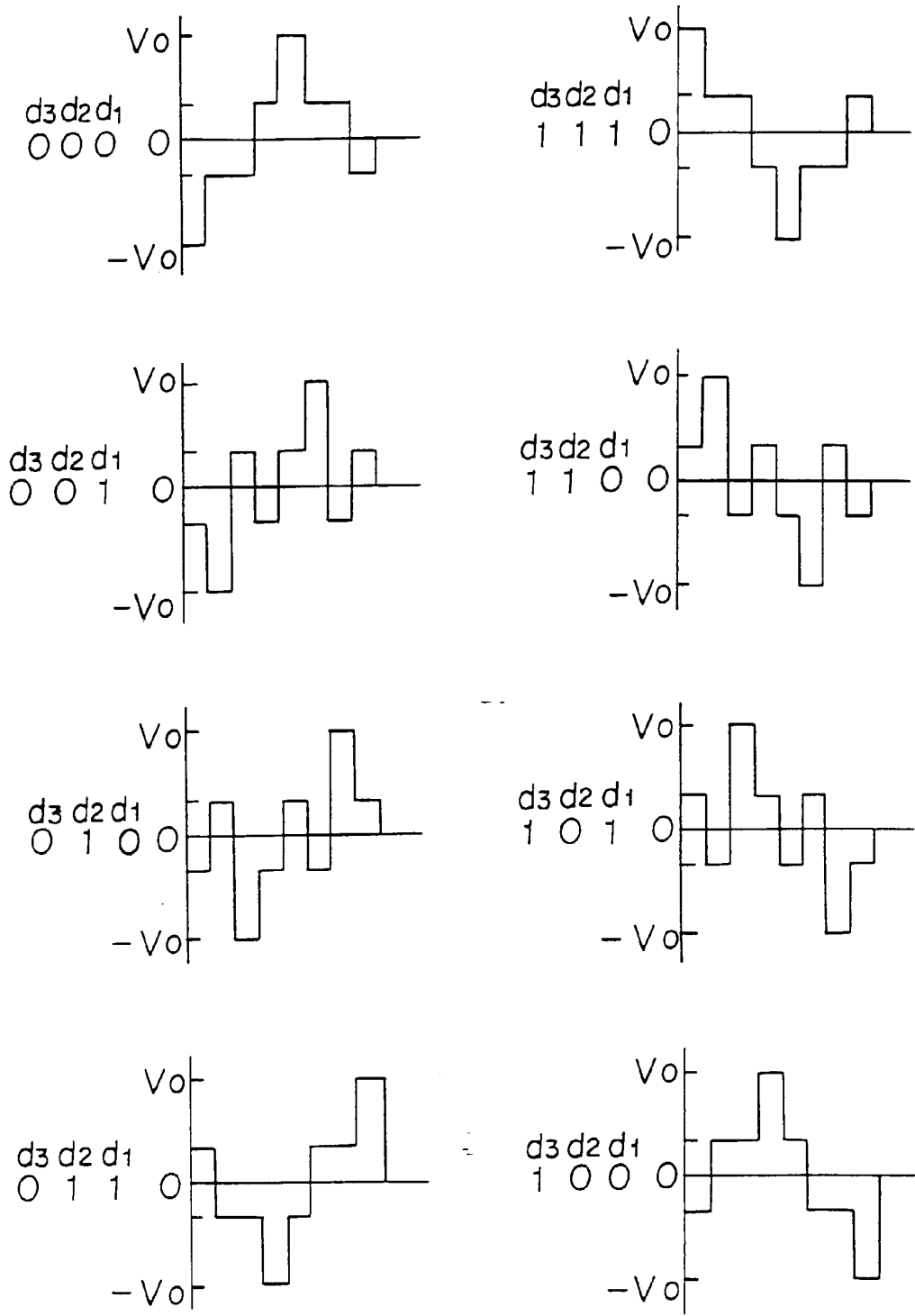


FIGURE 12

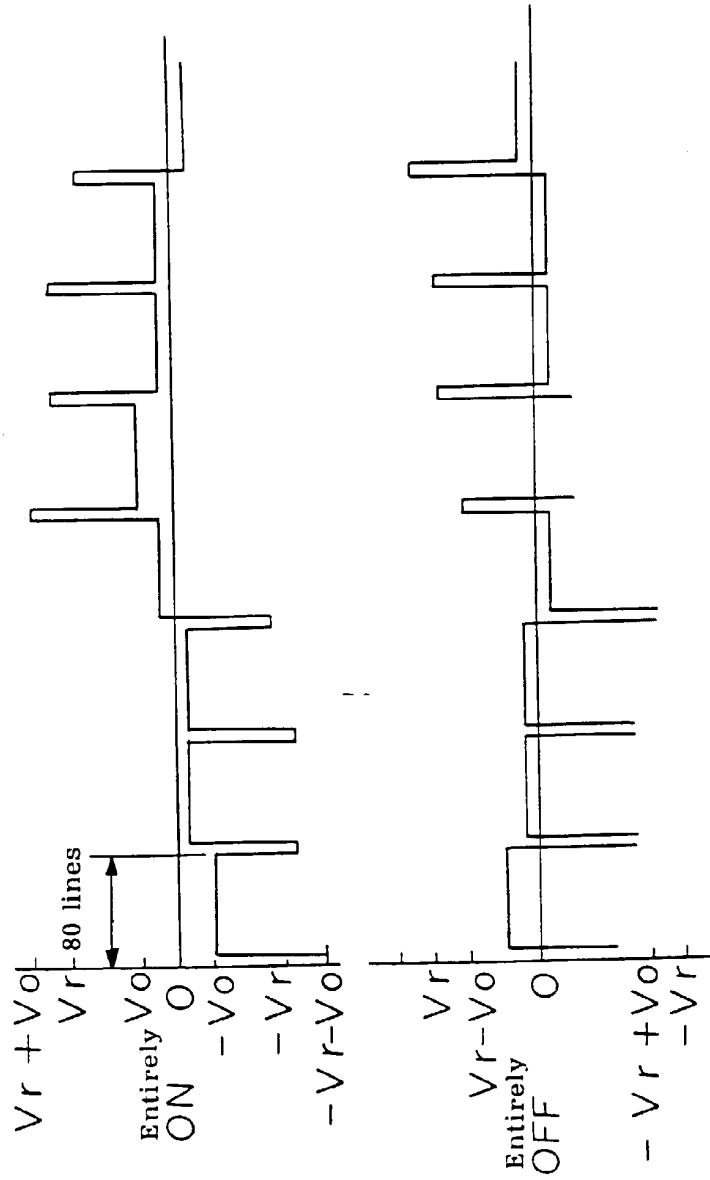


FIGURE 13

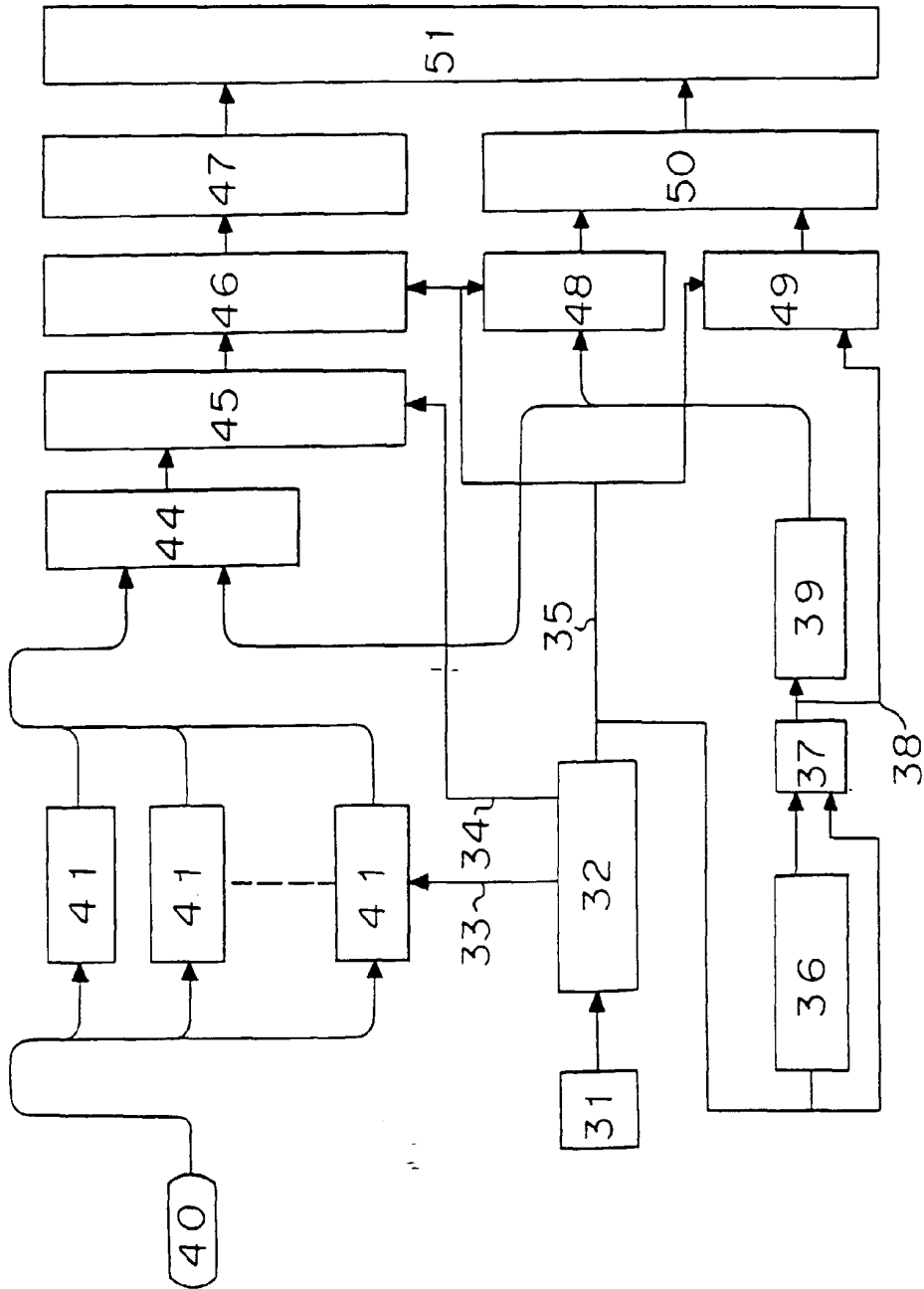


FIGURE 14

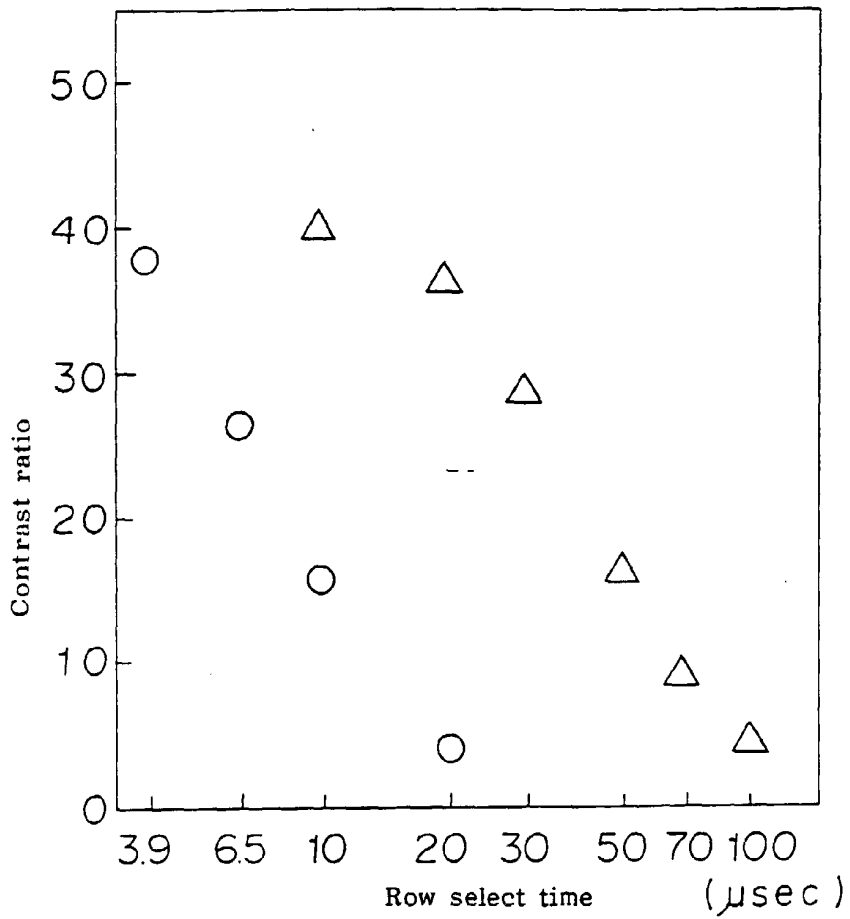


FIGURE 15

